

LOT 18

BRYANT &

MINEA'S.

REAR BLOCK 13.

WOODBURY &

CASES ADD, N

JOHN B. IRVINE, SURVEYOR.

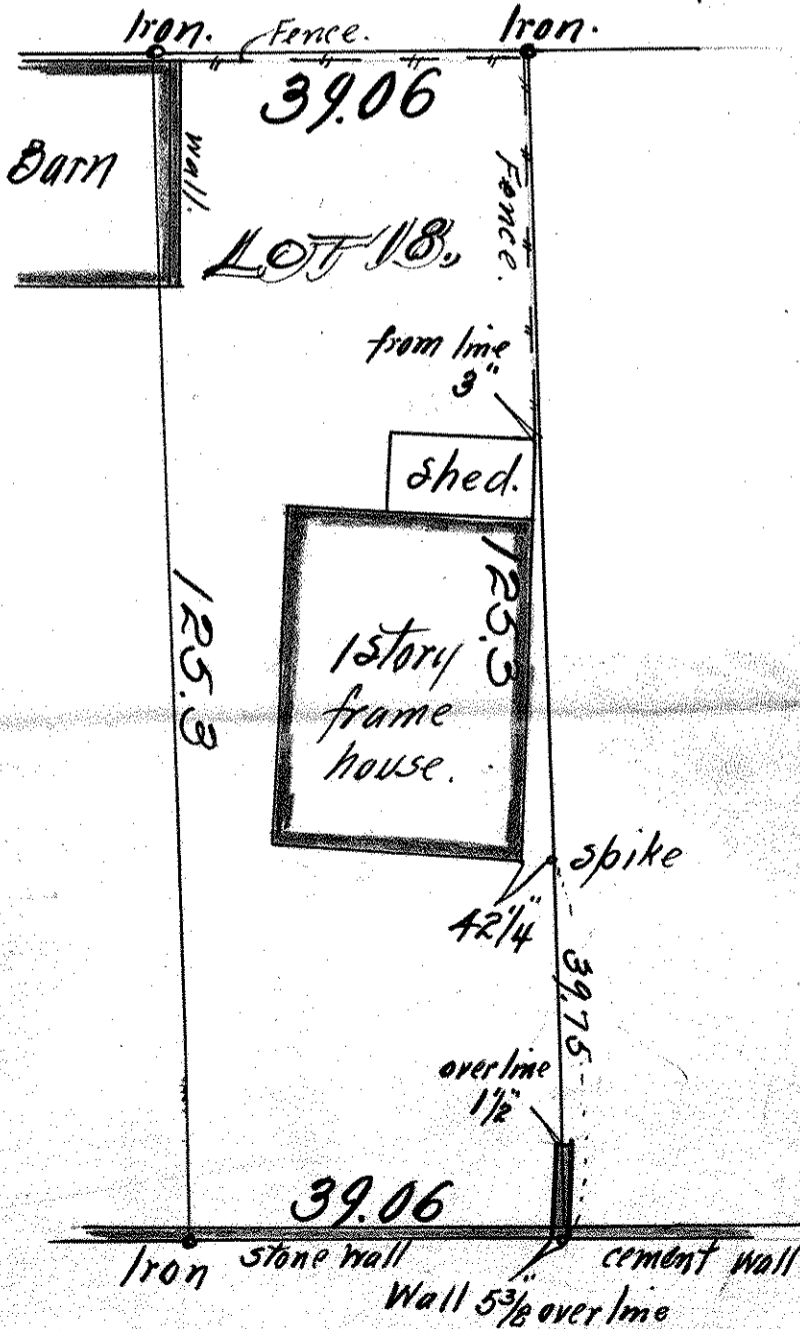
408 GLOBE BLDG.

ST. PAUL, MINN.

MAY 27-1916

Scale 20 ft. per inch.

ALLEY.



PAGE ST.