

LOT 18  
BRYANT &  
MINEA'S,  
REAR BLOCK 13,  
WOODBURY &  
CASE'S ADD.

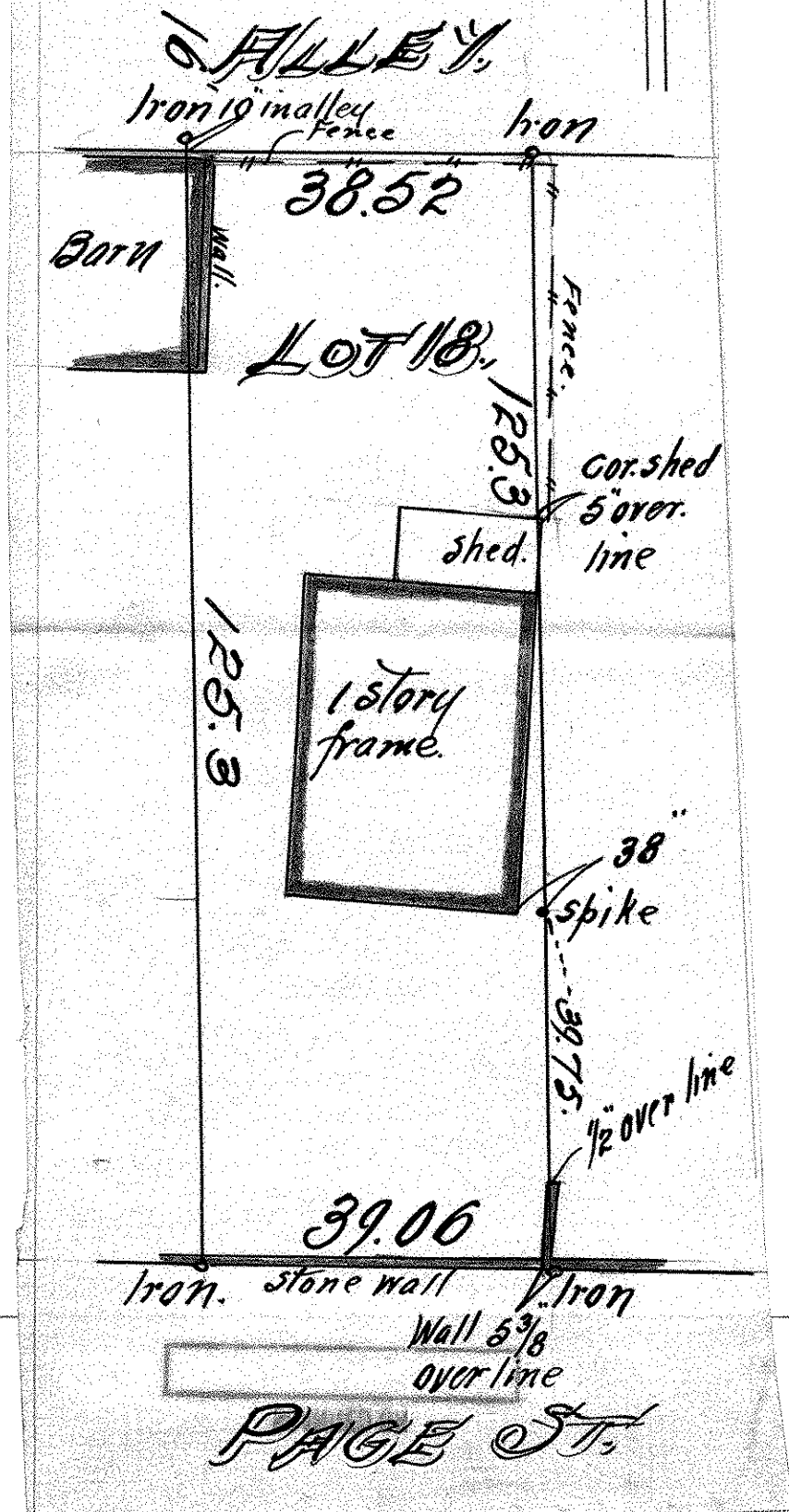
JOHN B. IRVINE, SURVEYOR. N

408 GLOBE BLDG.

ST. PAUL, MINN.

MAY 8-1916.

Scale 20 ft. per inch.



PAGE ST.