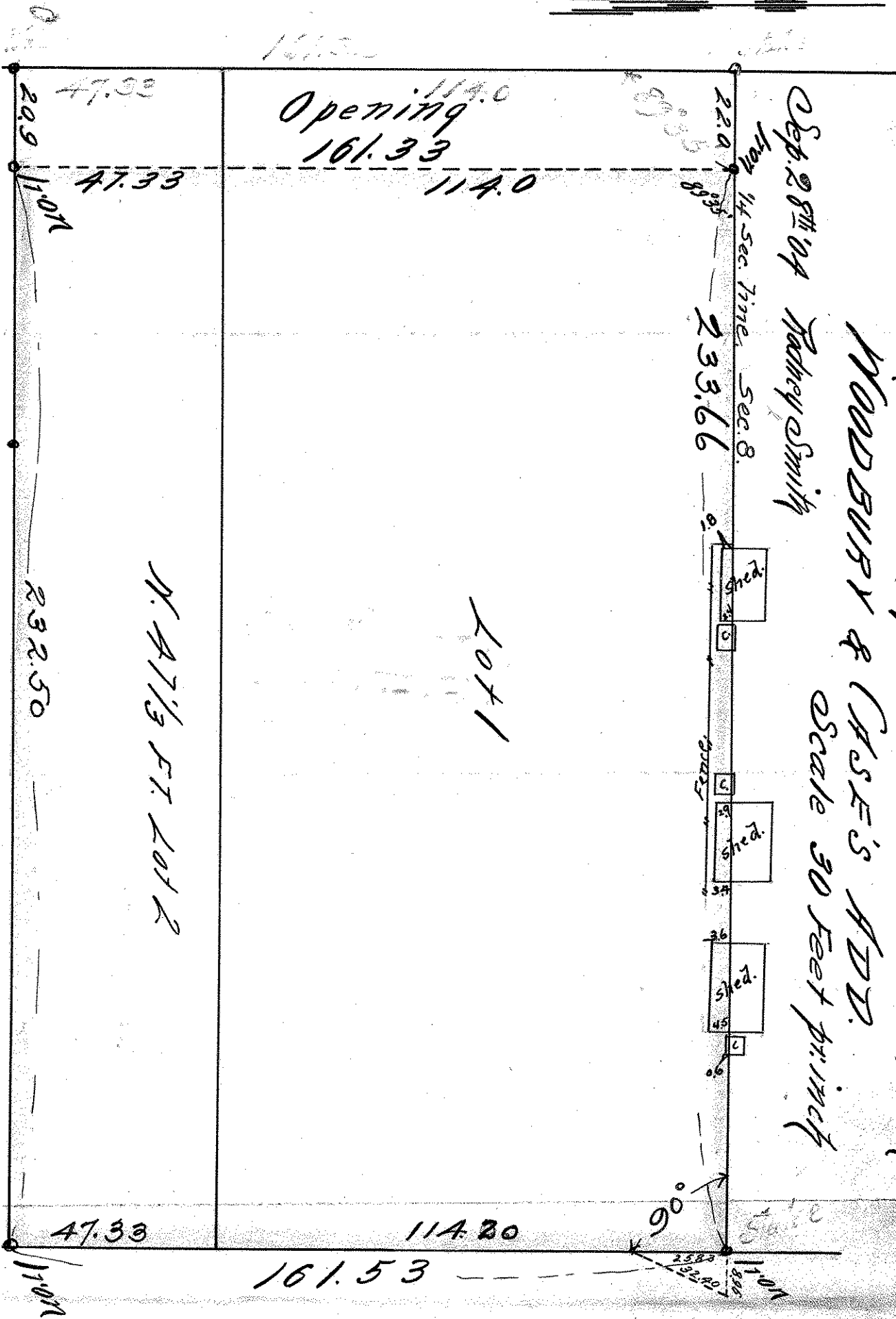


S. ROBERT

ST.

S



Opening 161.33

Dep. 28th of Rodney Smith

LOT 1 & NORTH 47 1/2 FEET OF LOT 2 BLY. 11

WOODBURY & CASE'S ADD.

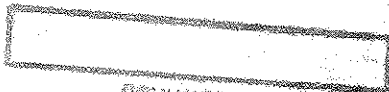
Scale 30 Feet per inch

Lot 1

N. 47 1/2 FT. Lot 2

STATE

ST.



NO CHANGE