

# CHARLES O. GEORGI COMPANY

2215 West County Road B

Saint Paul, Minnesota 55113

REGISTERED CIVIL ENGINEER AND LAND SURVEYOR

## Certificate of Survey

I Hereby Certify that this plat shows a <sup>location</sup> survey made by me of the property described on this plat, and that the corners are correctly placed as shown, and that all locations have been correctly shown. *No corners placed.*

Surveyed For *Ellis Pope*

Date *March 1973*

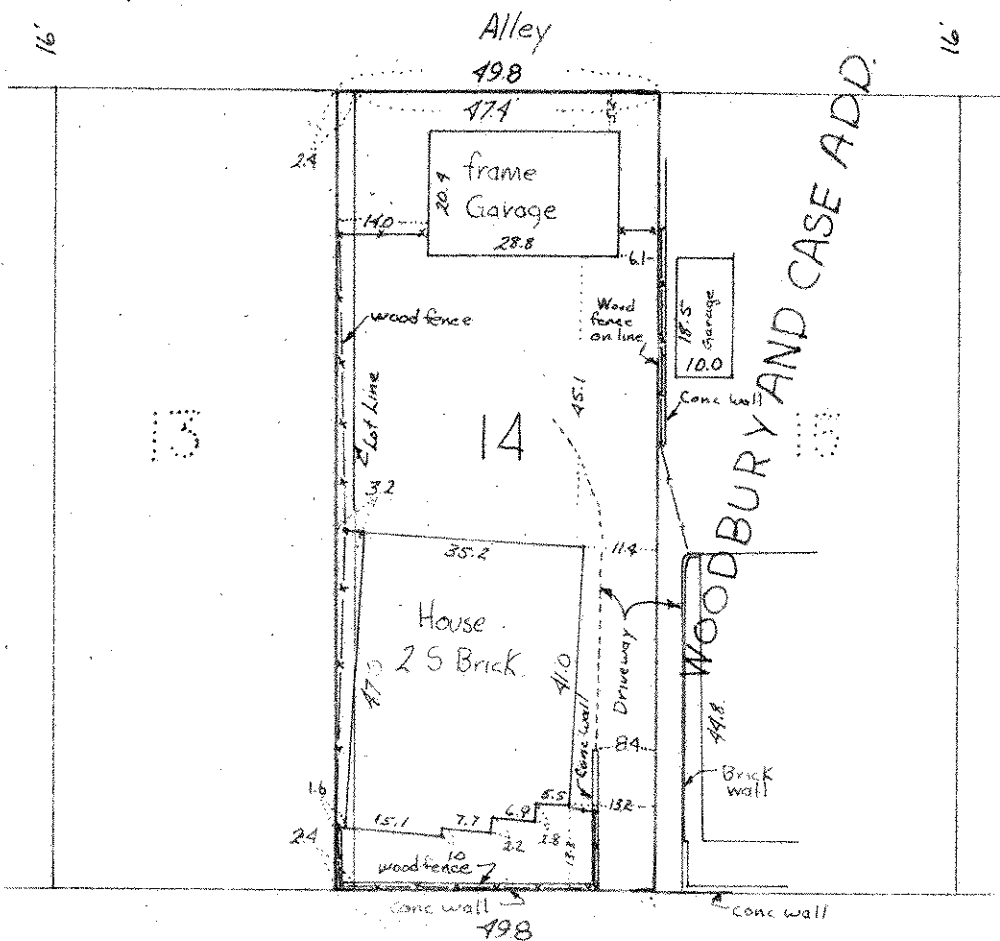
Scale *1" = 30'*

By *Charles O. Georgi*  
REGISTERED LAND SURVEYOR

Description:

Lot 14 and the East 2.4 feet of Lot 13, Block 8, Woodbury + Case Addition, subject to Alley on and across the North 8 feet thereof, Ramsey County, Minnesota.

\* Added to description as furnished.



E. MORTON ST.