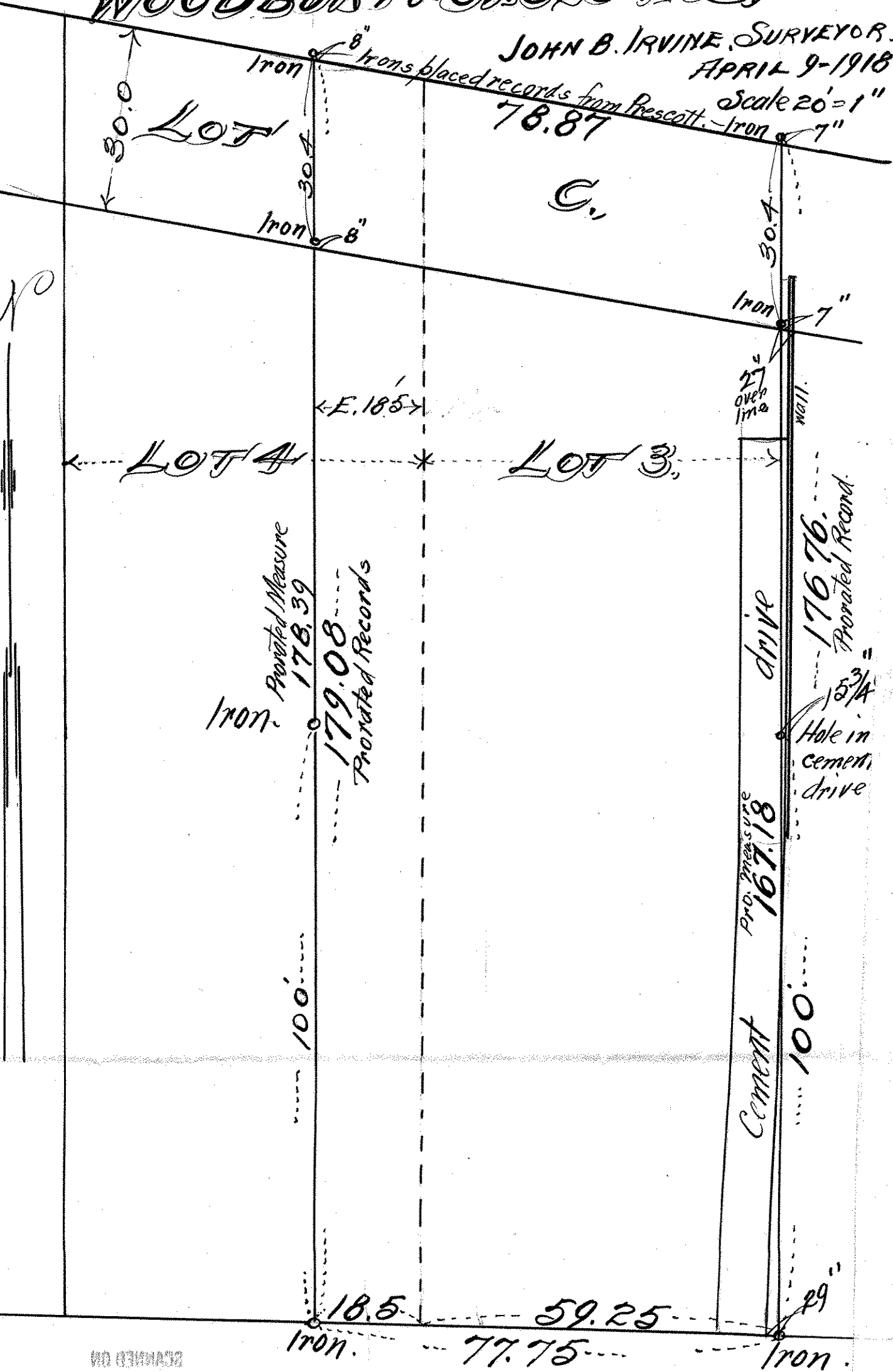


LOT 3 & EAST 18.5ft. LOT 4 &
 THAT PART OF LOT C LYING N'LY THEREOF
 BLOCK 2.

WOODBURY & GASE'S ADD.

JOHN B. IRVINE, SURVEYOR.
 APRIL 9-1918.

Scale 20' = 1"
 78.87
 Iron 7"



RECORDED ON

PRESCOTT ST.