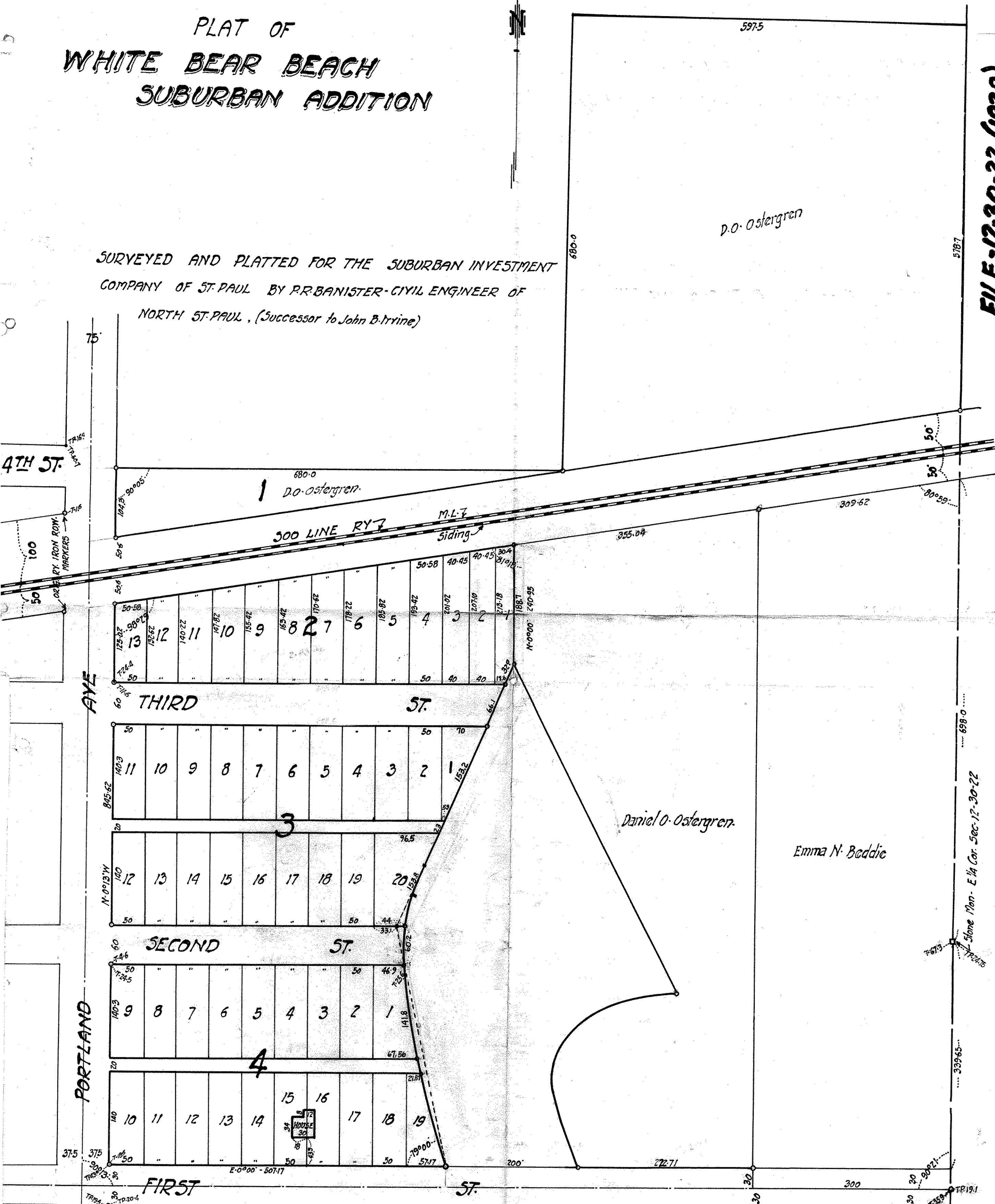


# PLAT OF WHITE BEAR BEACH SUBURBAN ADDITION

SURVEYED AND PLATTED FOR THE SUBURBAN INVESTMENT  
COMPANY OF ST. PAUL BY P.R. BANISTER - CIVIL ENGINEER OF  
NORTH ST. PAUL, (Successor to John B. Irvine)

FILE-12-30-22 (1929)



SCALE - 100' = 1"  
APRIL - 10 - 1930

° Denotes Iron Monuments

P.R. Banister - Registered Professional Engineer.  
OFFICE - 69-7th Ave - North St. Paul - Phone N-5-P. 407  
RES - 139-18th Ave - " " " " " N-5-P. 448