

FROM THE OFFICE OF

CHARLES O. GEORGI COMPANY

2215 West County Road B Saint Paul, Minnesota 55113
REGISTERED CIVIL ENGINEER AND LAND SURVEYOR



I Hereby Certify that this plat shows a survey made by me of the property described on this plat, and that the corners are correctly placed as shown, and that all locations have been correctly shown.

Surveyed For Allen Buckbee

Date June 1976

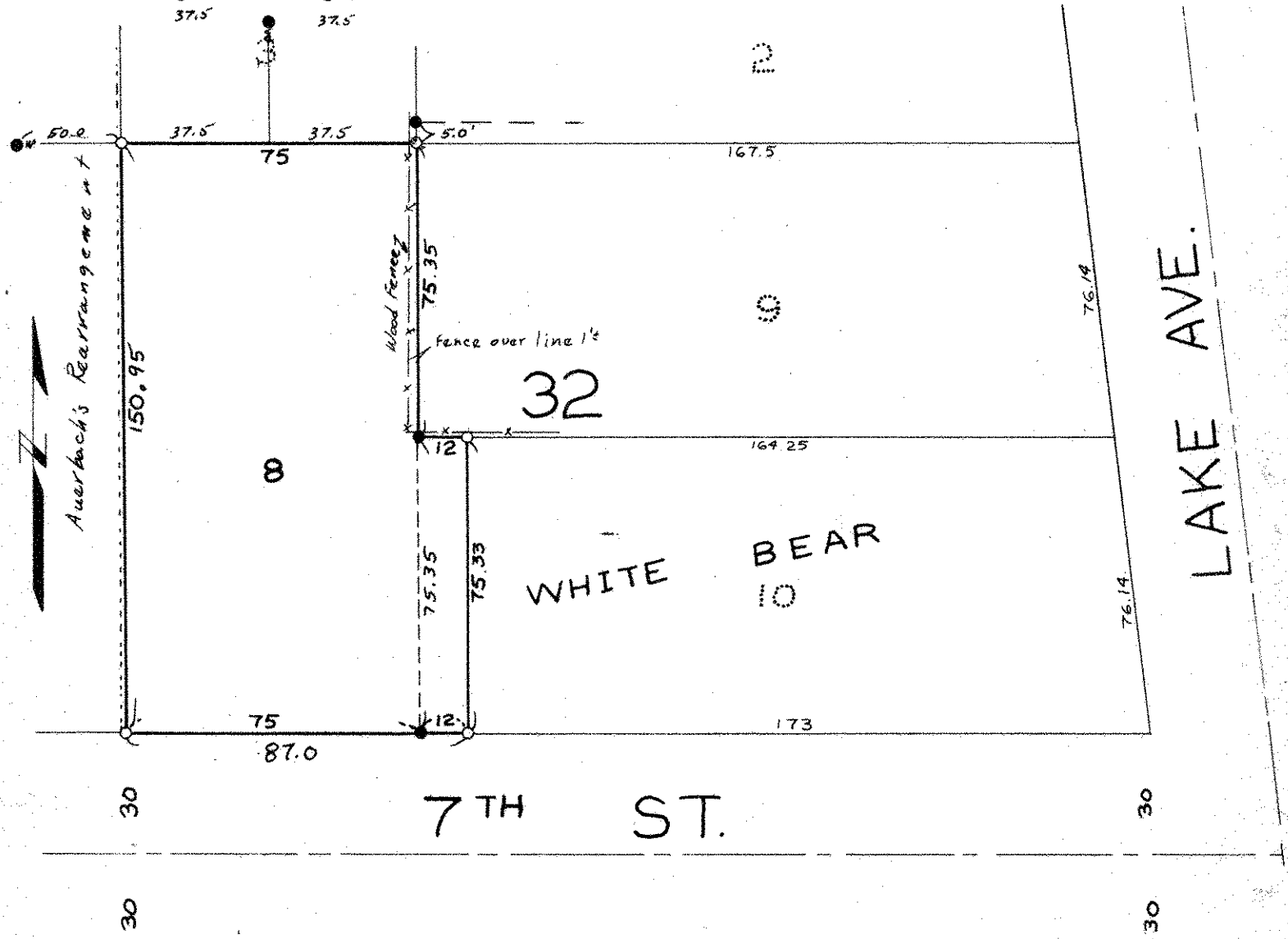
Scale 1" = 40'

By Charles O. Georgi
REGISTERED LAND SURVEYOR

Description:

Lot 8 and the West 12 Feet of Lot 10,
Block 32, White Bear

Ramsey County, Minnesota



SCANNED ON



o Denotes Iron Monument
• Denotes Iron Found in place