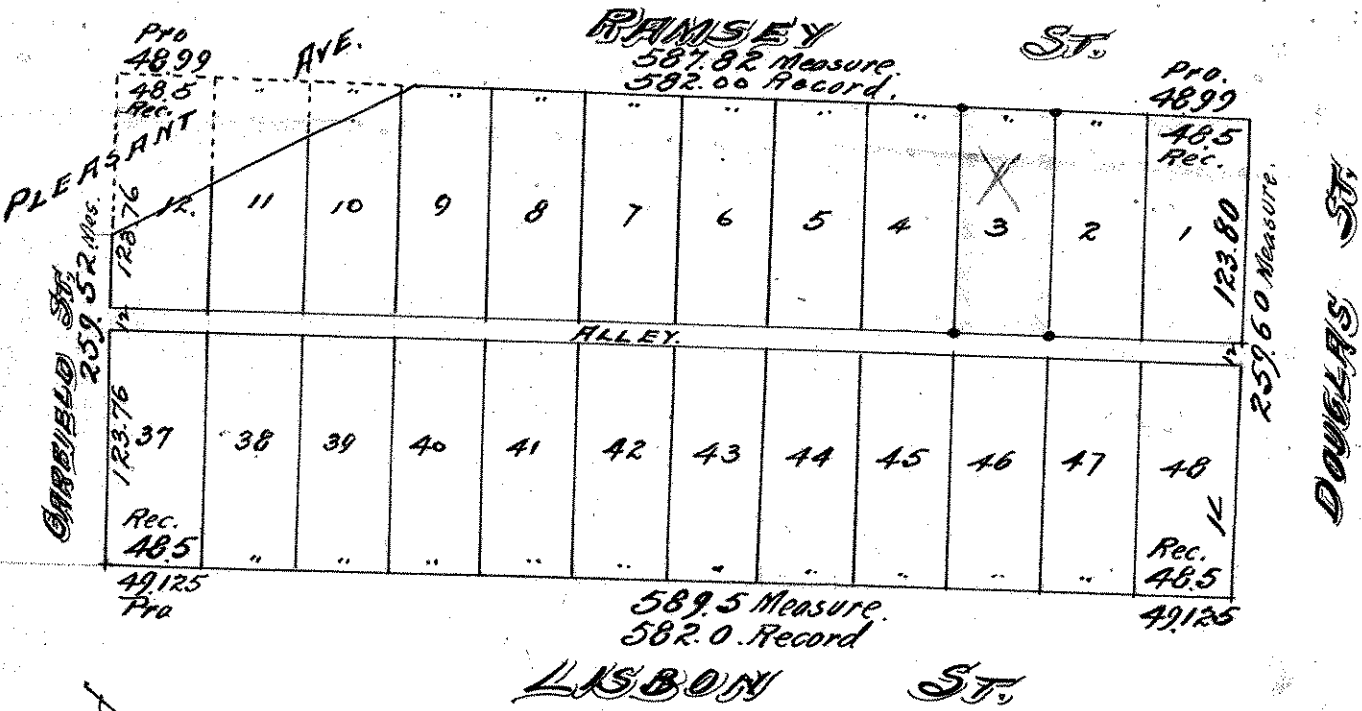


LOT 3.

WHITACRE, BRISBINE & MULLEN'S SUB'D.
 LOTS 1 & 2 LEECH'S OUT LOTS.

JOHN B. IRVINE, SURVEYOR.
 408 GLOBE BLDG.
 ST. PAUL, MINN.
 OCT. 7-1911.
 SCALE 100ft. per inch.

"NOTE"
 surplus distributed pro rata



I hereby certify to having surveyed lot 3 Whitacre, Brisbane & Mullen's Sub'd. of Lots 1 & 2 Leech's Out Lots and located the dwellings, sidewalks & fences thereon as shown by this map and the same is correct.

John B. Irvine Surveyor.
 Oct. 7-1911.

