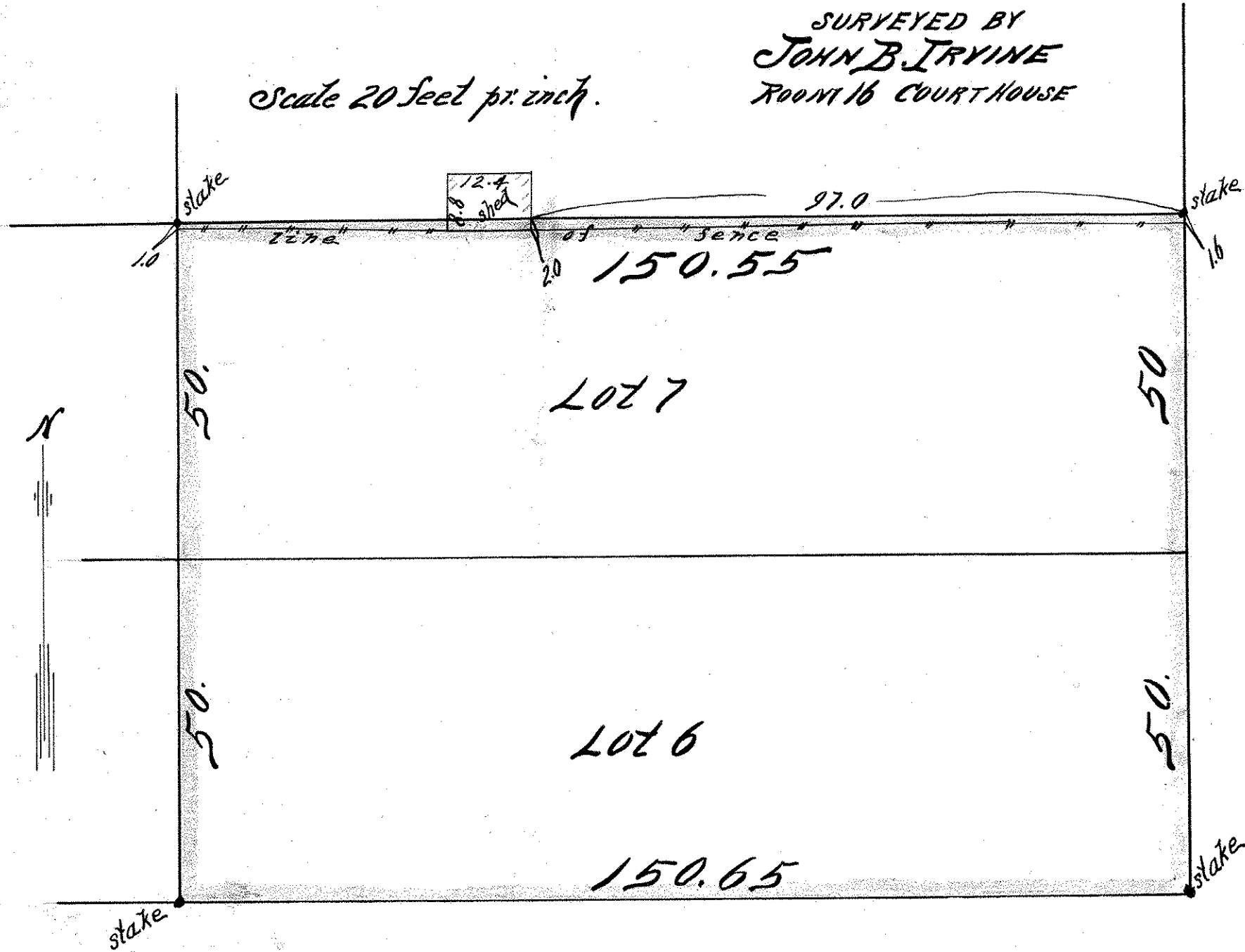


# LOTS 6 & 7, BLOCK 80 WEST ST. PAUL PROPER

SURVEYED BY  
JOHN B. IRVINE  
ROOM 16 COURTHOUSE

Scale 20 feet pr. inch.



Stryker & Ave.

St. Paul Minn June 5<sup>th</sup> 1901

I, hereby certify that this diagram correctly represents  
"Lots 6 & 7 Block 80 West St. Paul Proper" as surveyed  
by me this day.



County Surveyor

Robie

60

St.