

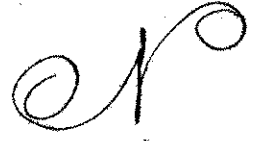
EAST 1/3 LOTS 4 & 5 AND EAST 1/3 SOUTH 1/2 LOT 3  
BLOCK 49

WEST ST. PAUL PROPER,

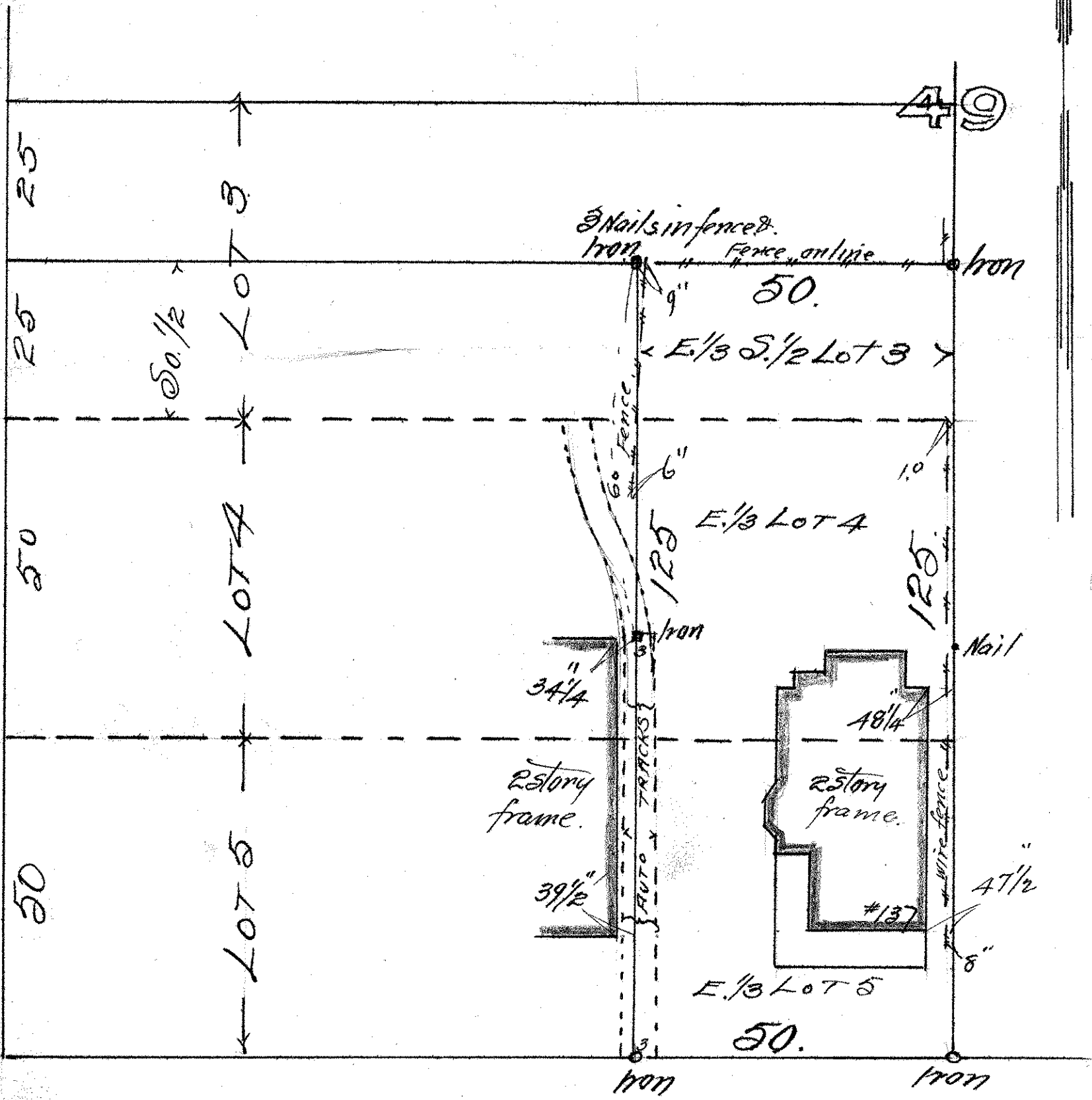
John B. Irvine, Surveyor.

July 12-1920.

Scale 20 ft. per inch.



CLINTON AVE.



E. CONGRESS ST.