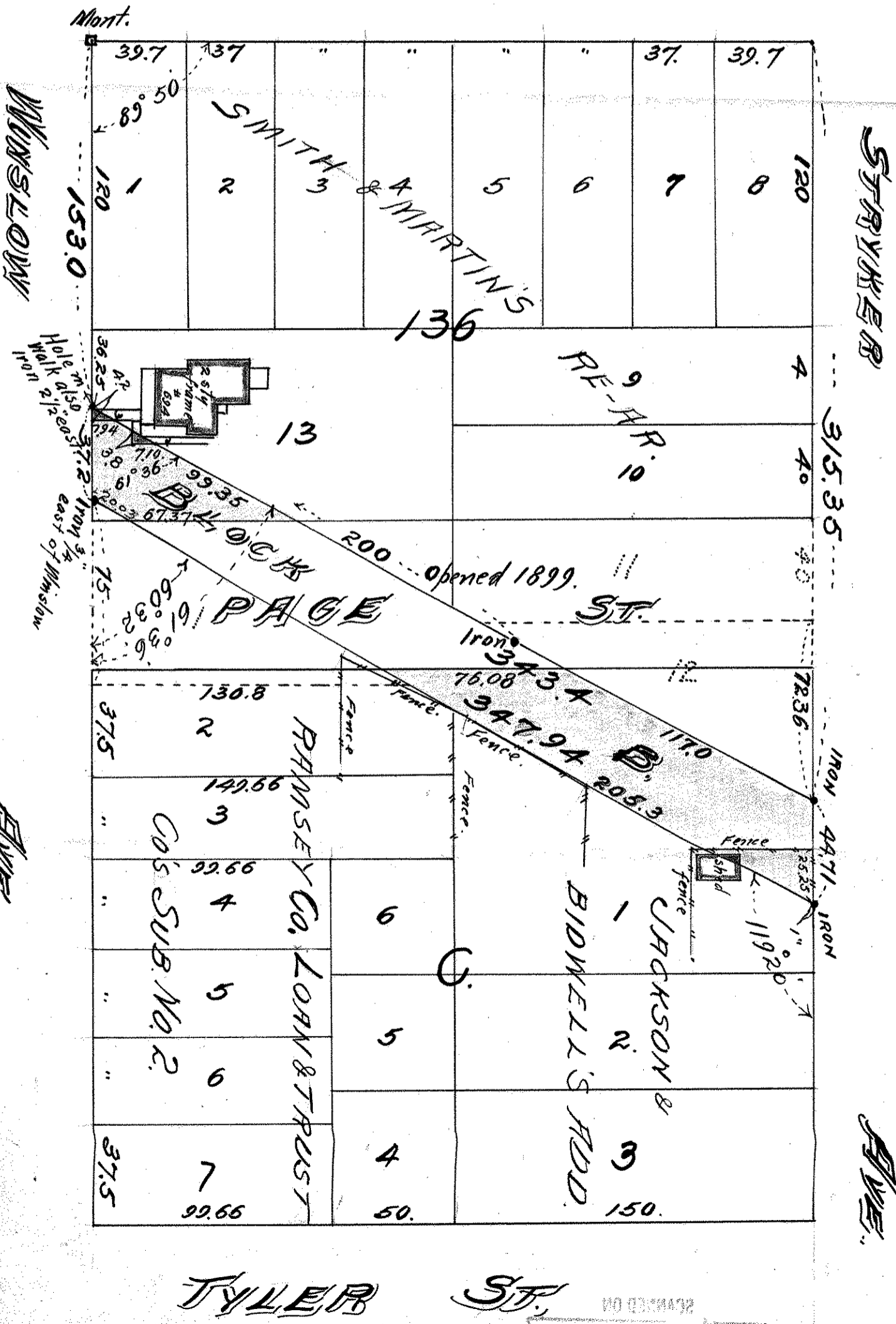


BLOCK B. EXCEPT PAGE ST. WEST ST PAUL PROPER

JOHN B. IRVINE, SURVEYOR.
408 GLOBE BLD'G.
ST. PAUL, MINN.
JULY 8-1910.

SCALE 50 ft. per inch.

MORTON ST.



TYLER ST.

NO. 1234567