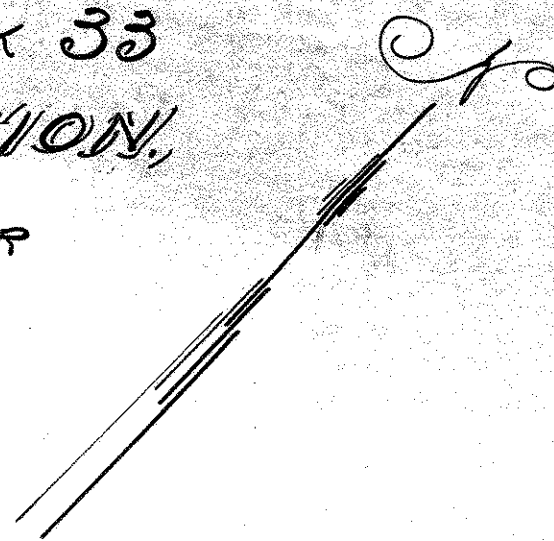
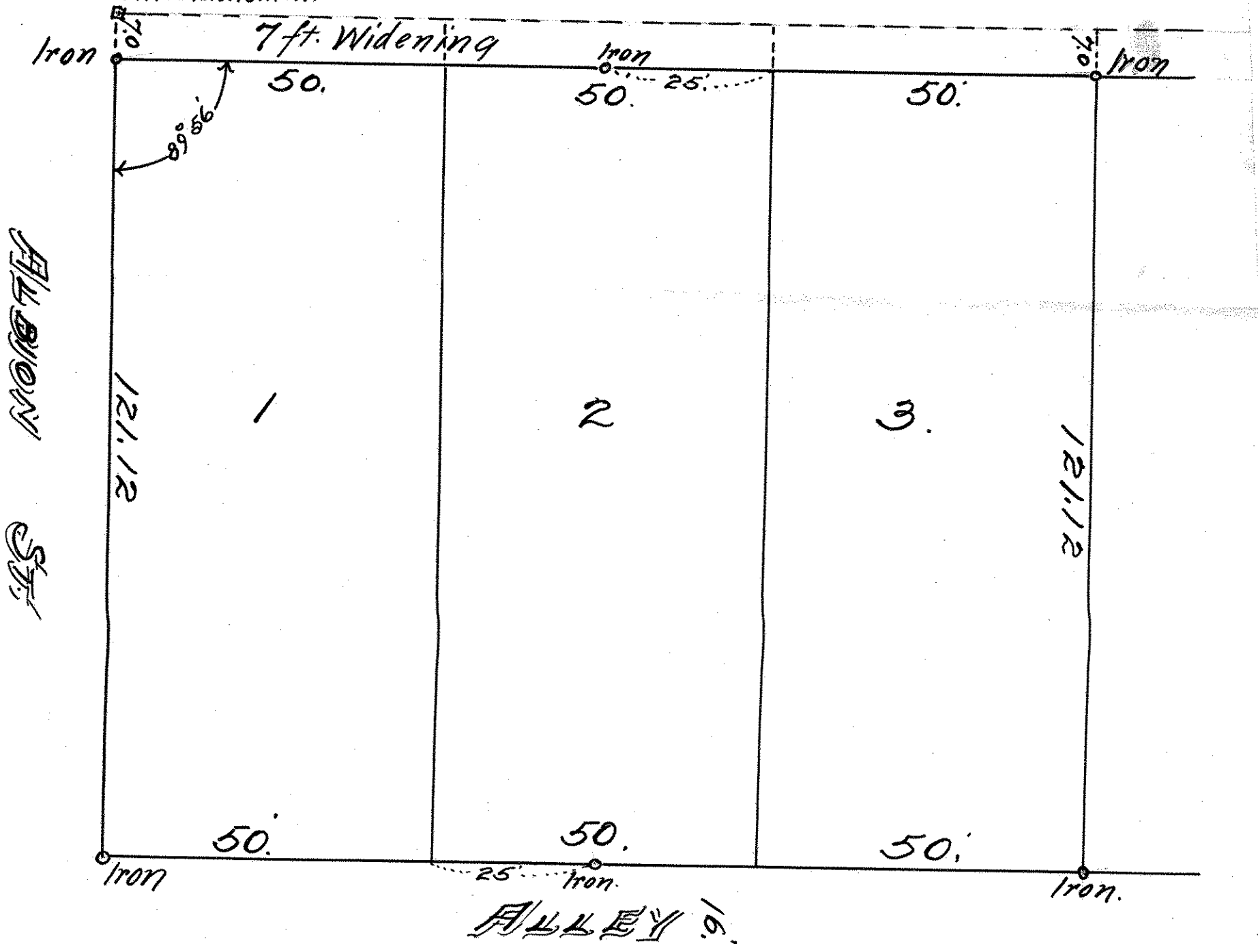


LOTS 1, 2 & 3 BLOCK 33
WEST END ADDITION,

JOHN B. IRVINE, SURVEYOR
285 MACKUBIN ST.
ST. PAUL, MINN.
MAY 24-1917
Scale 20 ft. per inch.



Granite Monument. W. SEVENTH ST.



ALBION ST.