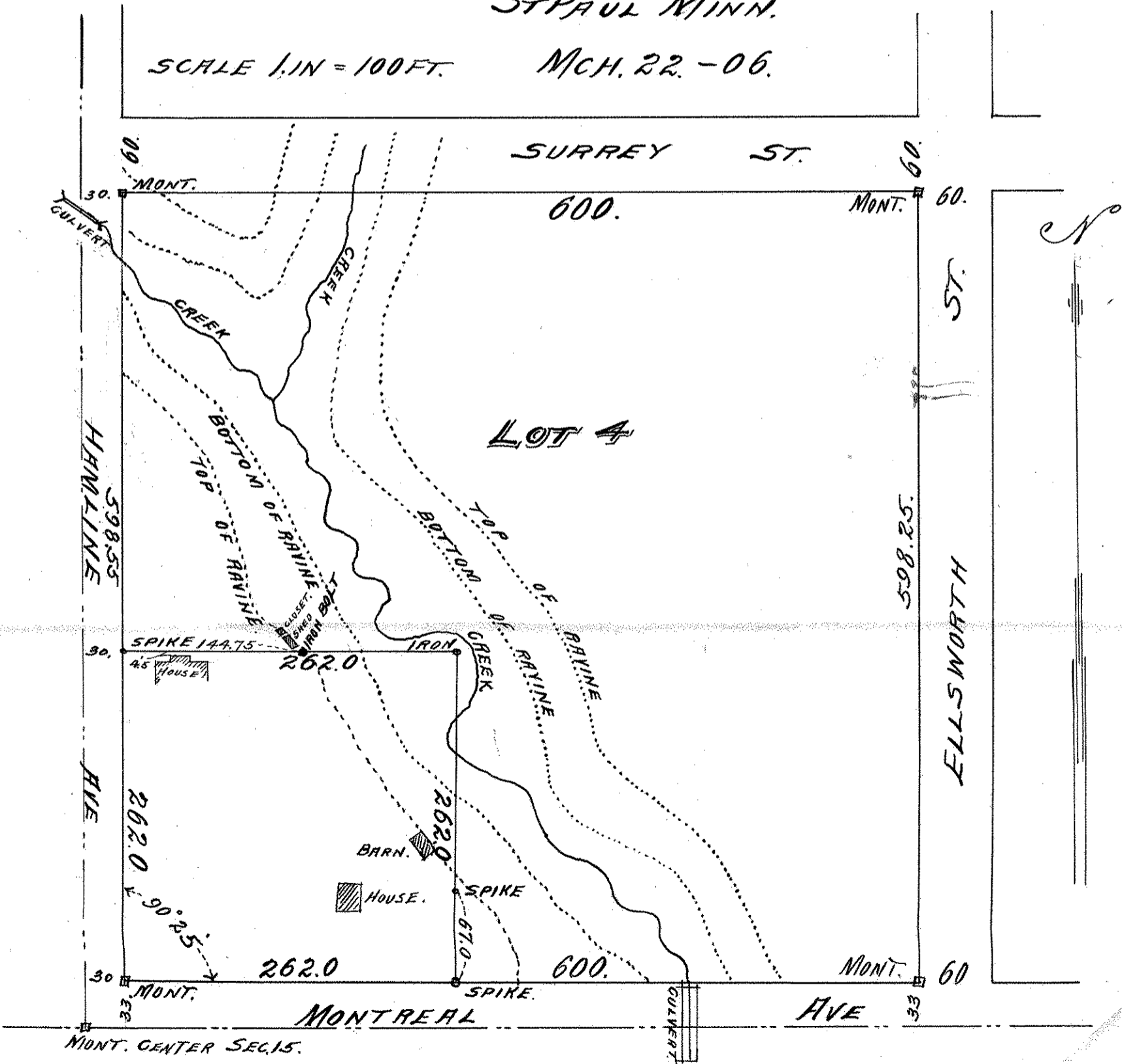


SURVEY OF  
 MISCELLANEOUS TRACT,  
 IN THE SOUTHWEST CORNER,  
 OF BLOCK 4,  
 WEST END ADD,

JOHN B. IRVINE, SURVEYOR,  
 ROOM 406 GLOBE BLDG.  
 ST. PAUL MINN.

SCALE 1/IN = 100 FT.      MCH. 22 - 06.



MONT. CENTER SEC. 15.

BOOK 209, PAGE 276  
 REGISTER OF DEEDS