

THE
 EASTERLY 40ft. LOT 16 &
 WESTERLY 40ft. LOT 17
 WEST CROCUS HILL.

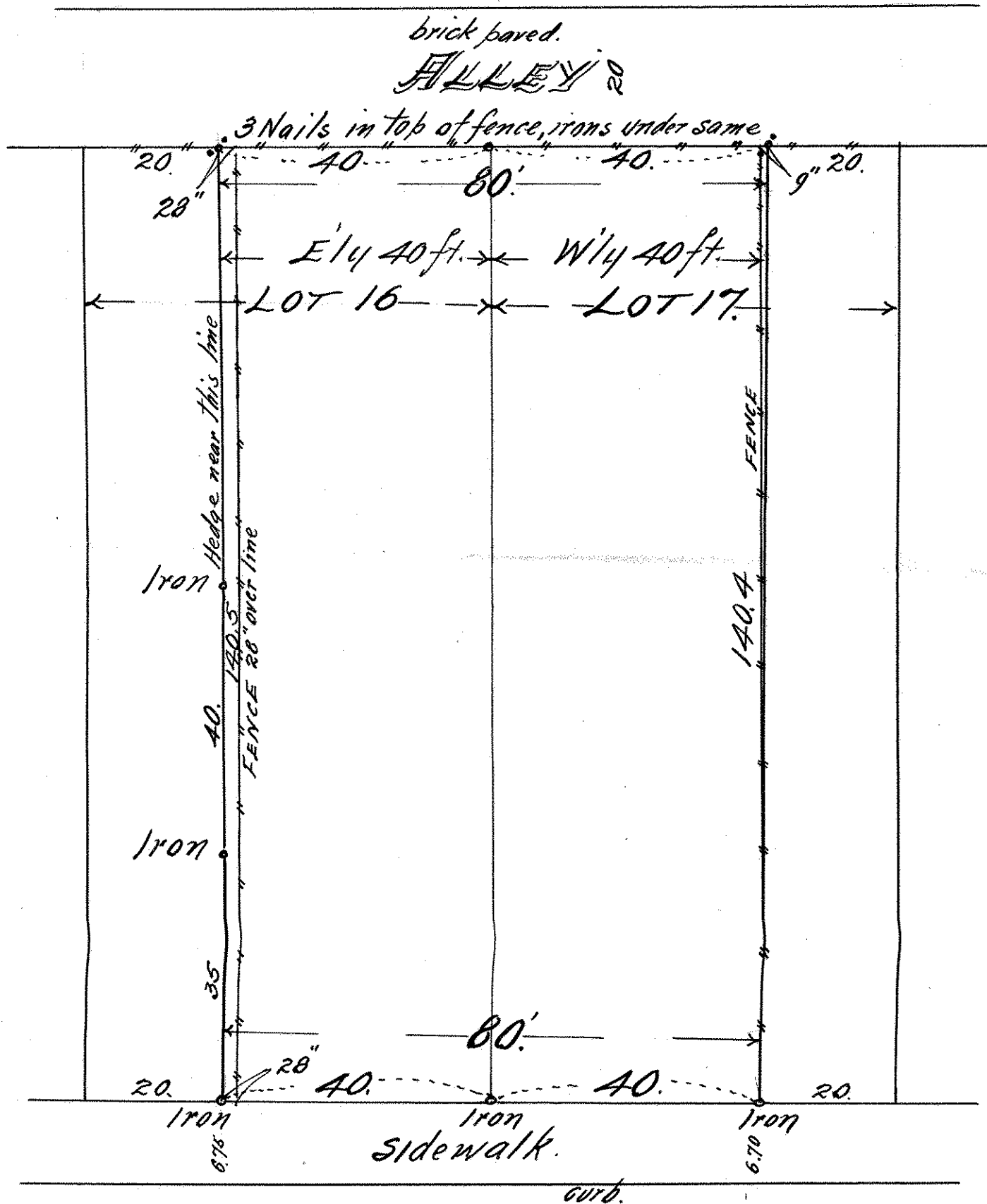
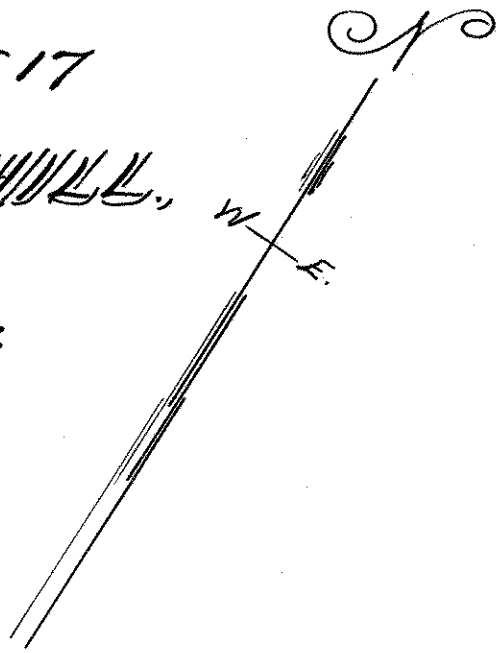
JOHN B. IRVINE, SURVEYOR.

408 GLOBE BLDG.

ST. PAUL, MINN.

APRIL 11-1913.

scale 20ft. per inch.



WEST CROCUS HILL,
 asphalt pavement.