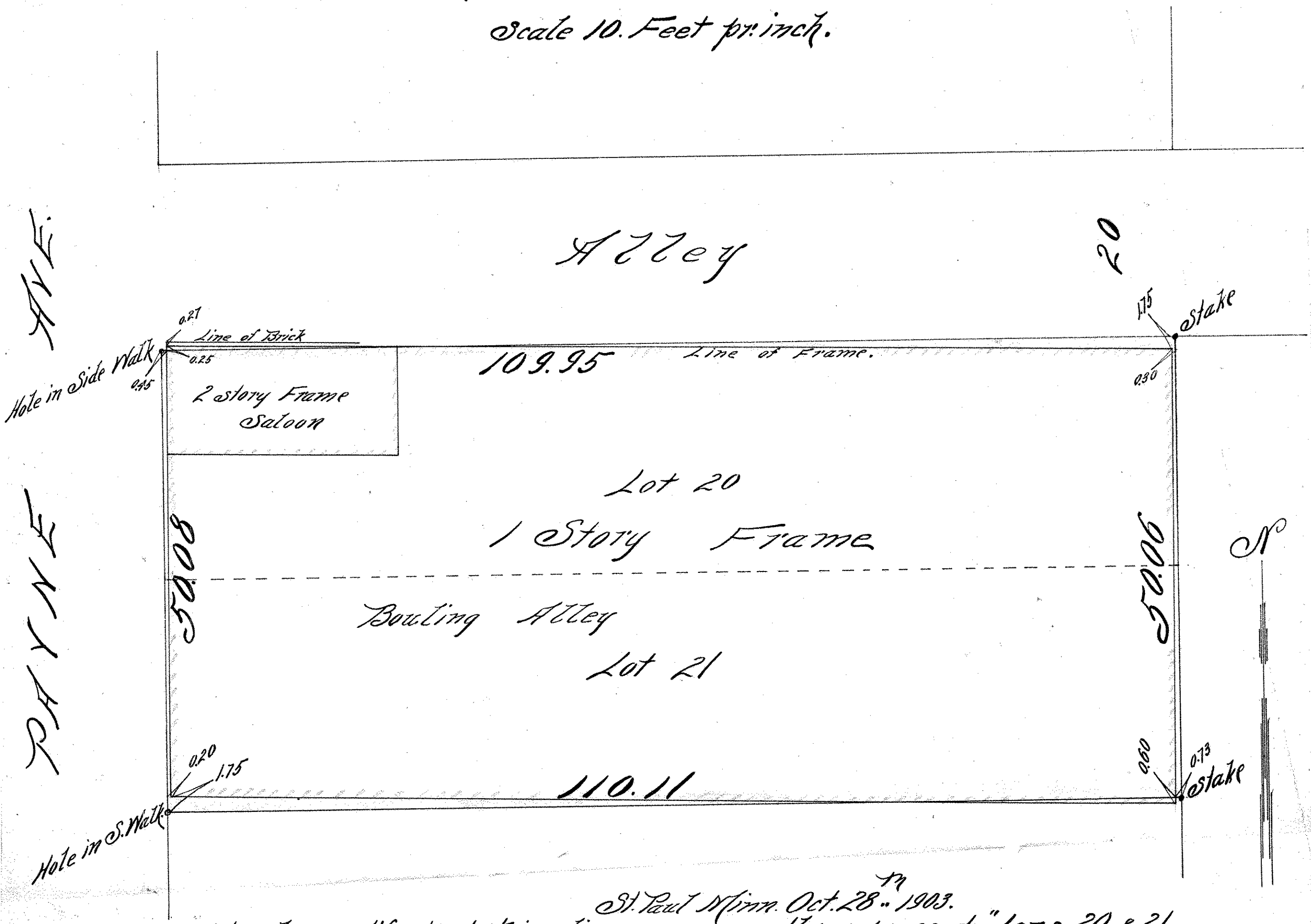


LOTS 20 AND 21 JOSEPH R. WEIDE'S SUB. OF
 BLOCK 24 ARLINGTON HILLS ADD.
 Scale 10. Feet pr. inch.



St. Paul Minn. Oct. 28th 1903.

I hereby certify that this diagram correctly represents "Lots 20 & 21, Jos. R. WEIDE'S SUB. OF BLK. 24 ARLINGTON HILLS ADD." as surveyed by me this day.

John D. Irvine
 County Surveyor, Room 16 Court House.