

LOT 4
C. WEIDE'S SUB'D
BLOCK 37
ARLINGTON HILL'S
ADDITION,

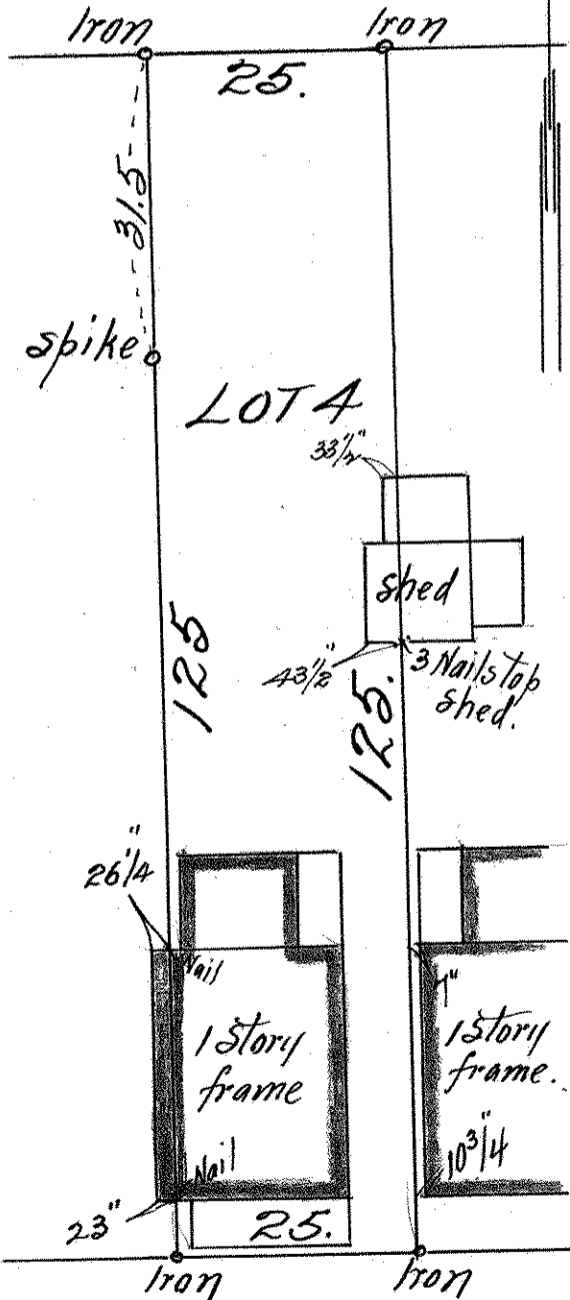
JOHN B. IRVINE, SURVEYOR.

408 GLOBE BLDG.
ST. PAUL, MINN.

APRIL-20th 1915

Scale 20 ft per inch.

WELLS ST.



ARLINGTON ST.