

NORTH 75ft LOTS 29 & 30

CHARLES WEIDE'S SUB.

BLOCK 35

ARLINGTON HILLS ADD.

JOHN B. IRVINE, SURVEYOR.

ST. PAUL, MINN.

FEB. 4 - 1916

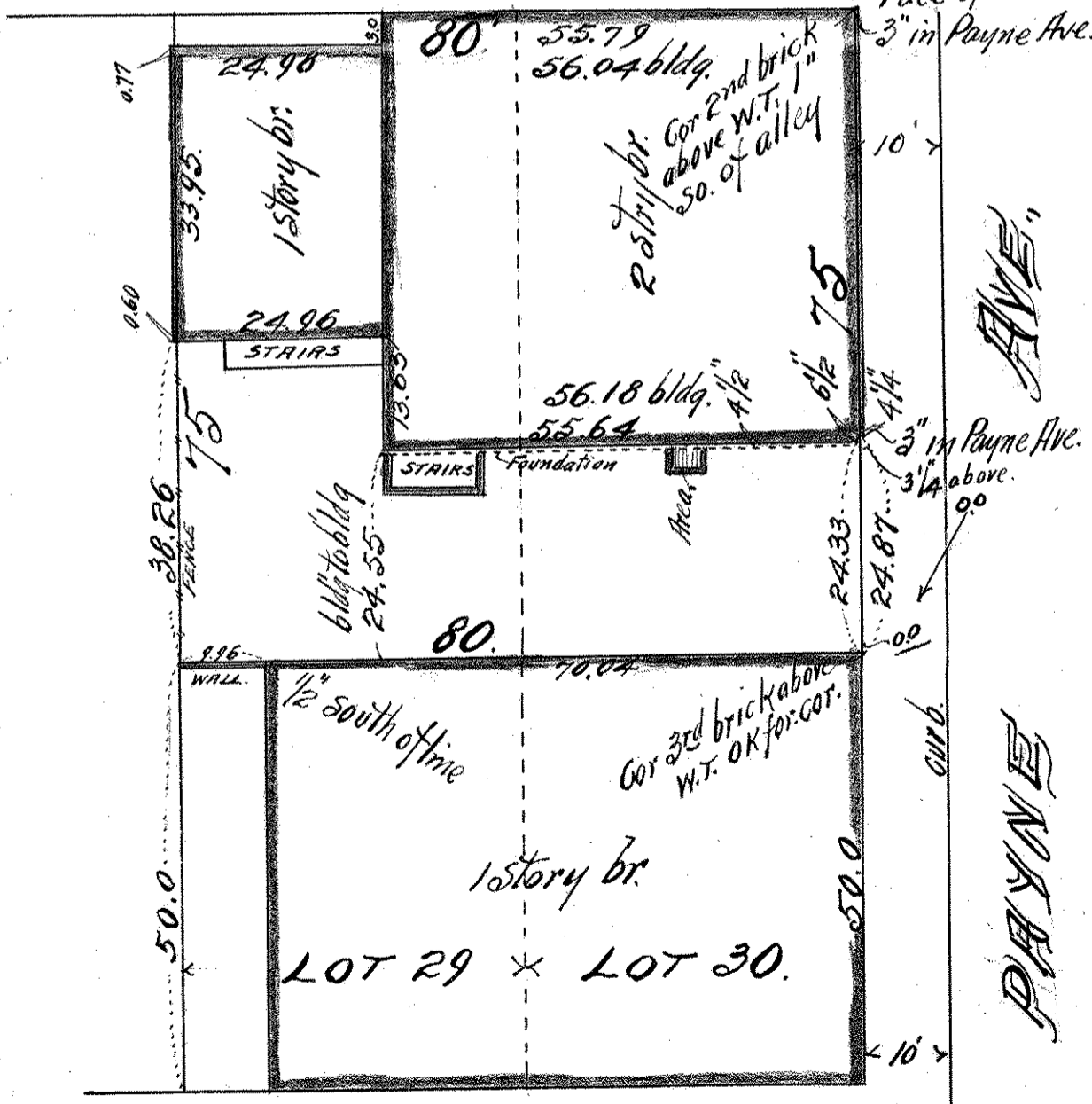
Scale 20ft per inch.

N

ALLEY

20

Face of brick.
3" in Payne Ave.



WELLS ST.