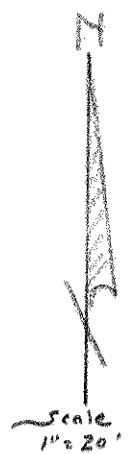
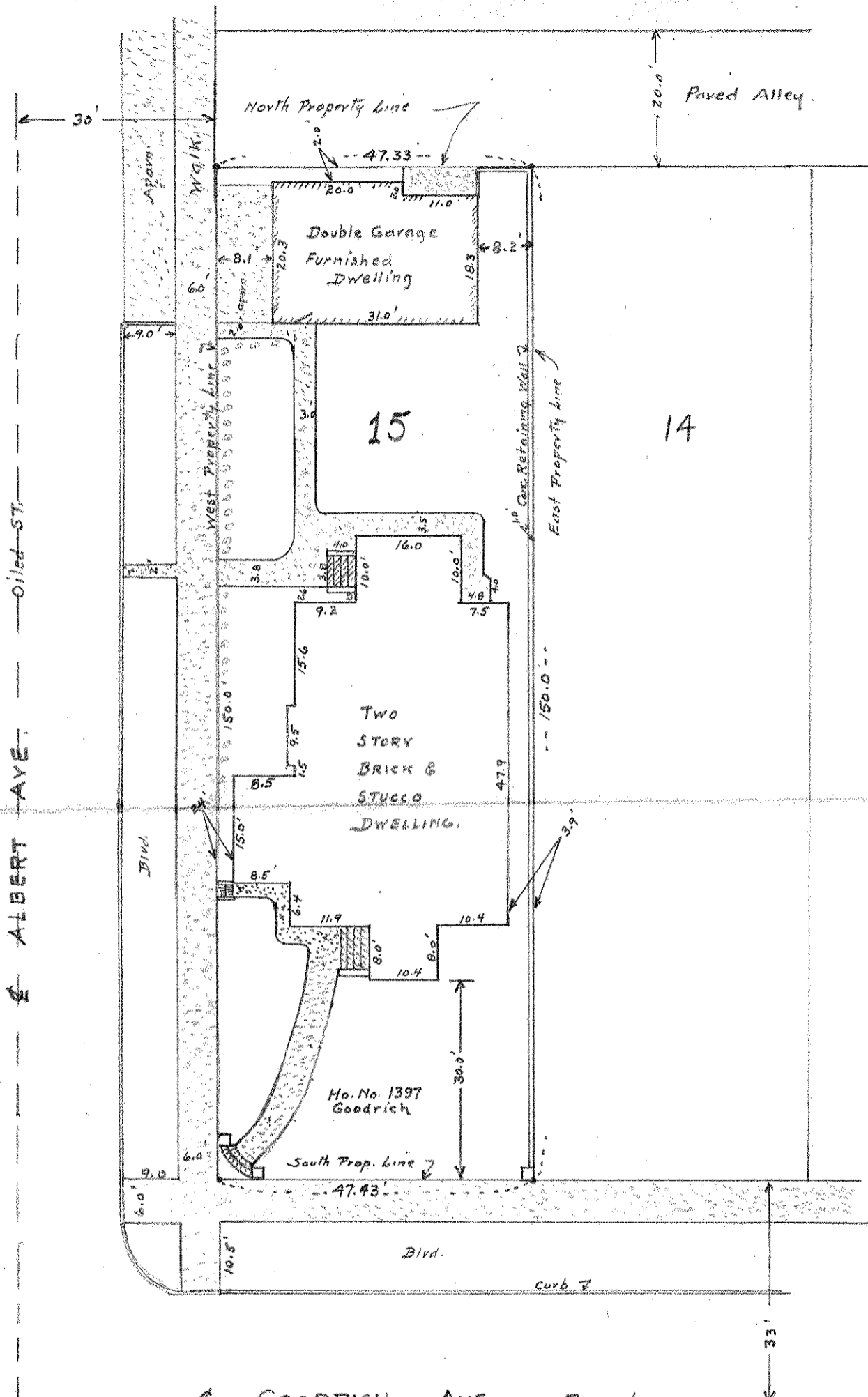


3-28-23



This is to certify that on July 21, 1938 the Banister Engineering Company, Registered Professional Engineers and Land Surveyors surved the property described as Lot 15, Block 3, WANN'S ADDITION to the City of St. Paul, Minnesota and that the annexed plat shows all buildings and improvements on said lot 15, as of July 21, 1938.

Signed L. J. Sullivan