

LOTS 10 & 11.

WEED & WILLIUS REAR,

BLOCK 23.

WOODLAND PARK ADD.

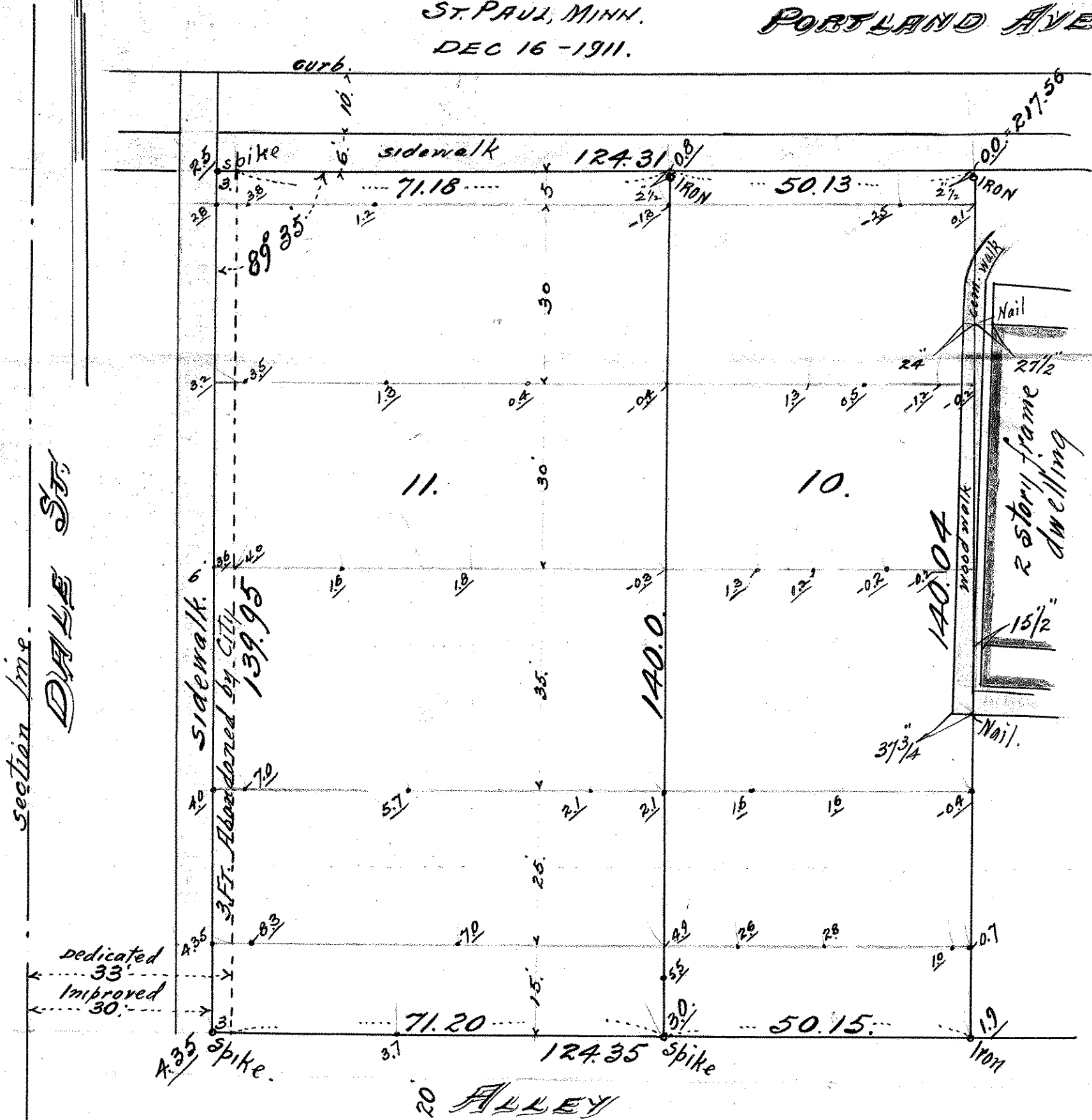
JOHN B. IRVINE, SURVEYOR.

ST. PAUL, MINN.

PORTLAND AVE.

DEC 16 - 1911.

Scale 1" = 20'



Section line.
DALE ST.

Sidewalk.
3 FT. Abandoned by City.
139.95

dedicated 33'
Improved 30'

scale 1" = 20'

Note:
Underlined figures indicate elevations above or below 0.0 at N.E. cor. lot 10.
- in front of elevs = below 0.0