

LOTS 5 & 6.
 WATSON & RICE'S
 SUB. A,
 PART OF BLK. 3
 RAMSEY'S ADD.

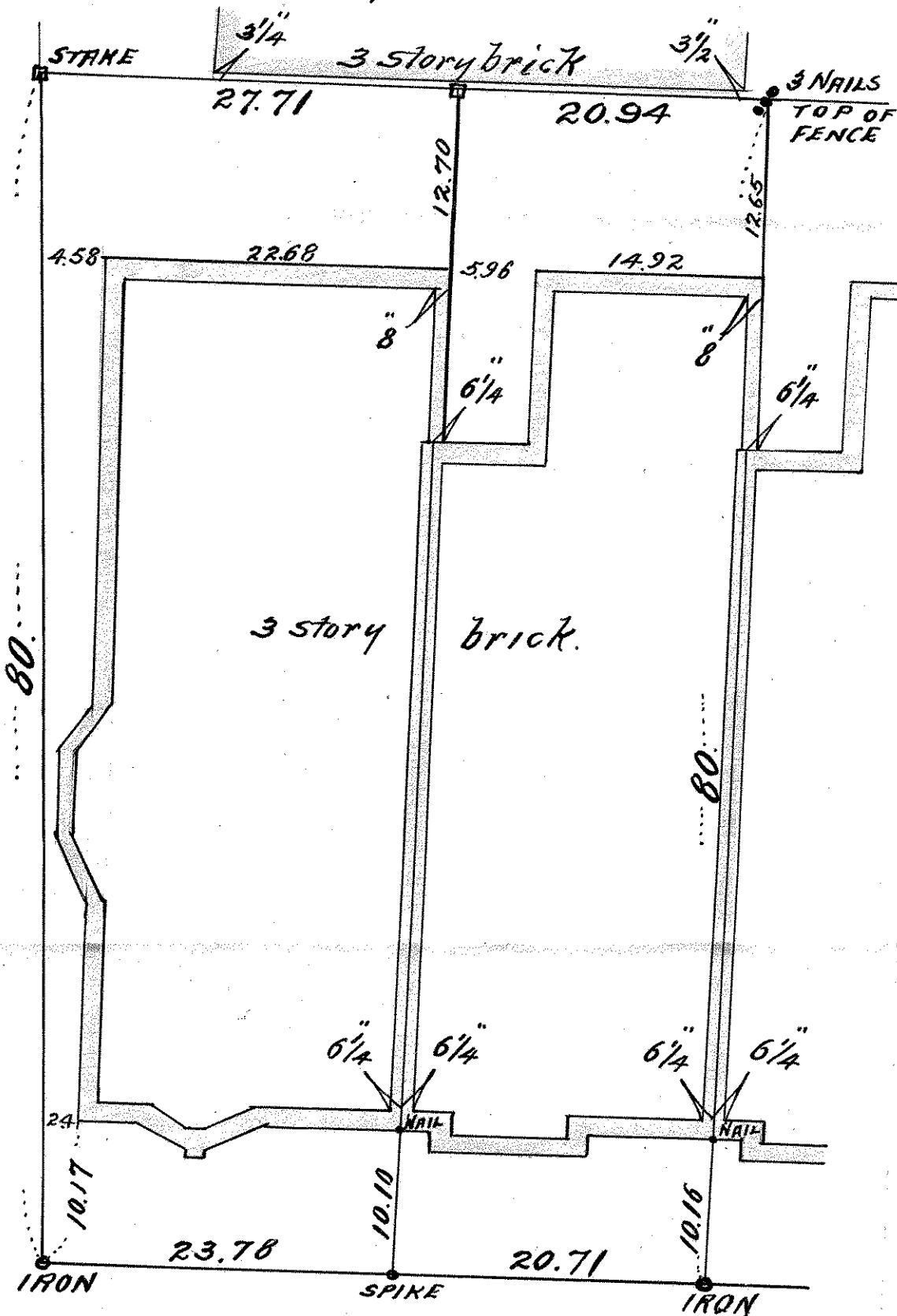
JOHN B. IRVINE, SURVEYOR.

ST. PAUL MINN.

APRIL 23-08

SCALE 10 ft. per inch.

TILTON ST.



ST PETER ST.