

Certificate of Survey

From the office of
GEORGI-SCHMIDT & ASSOC. INC.
 3092 No. Lexington Ave., Roseville, Mn. 55113
 LAND SURVEYING
 483-4408

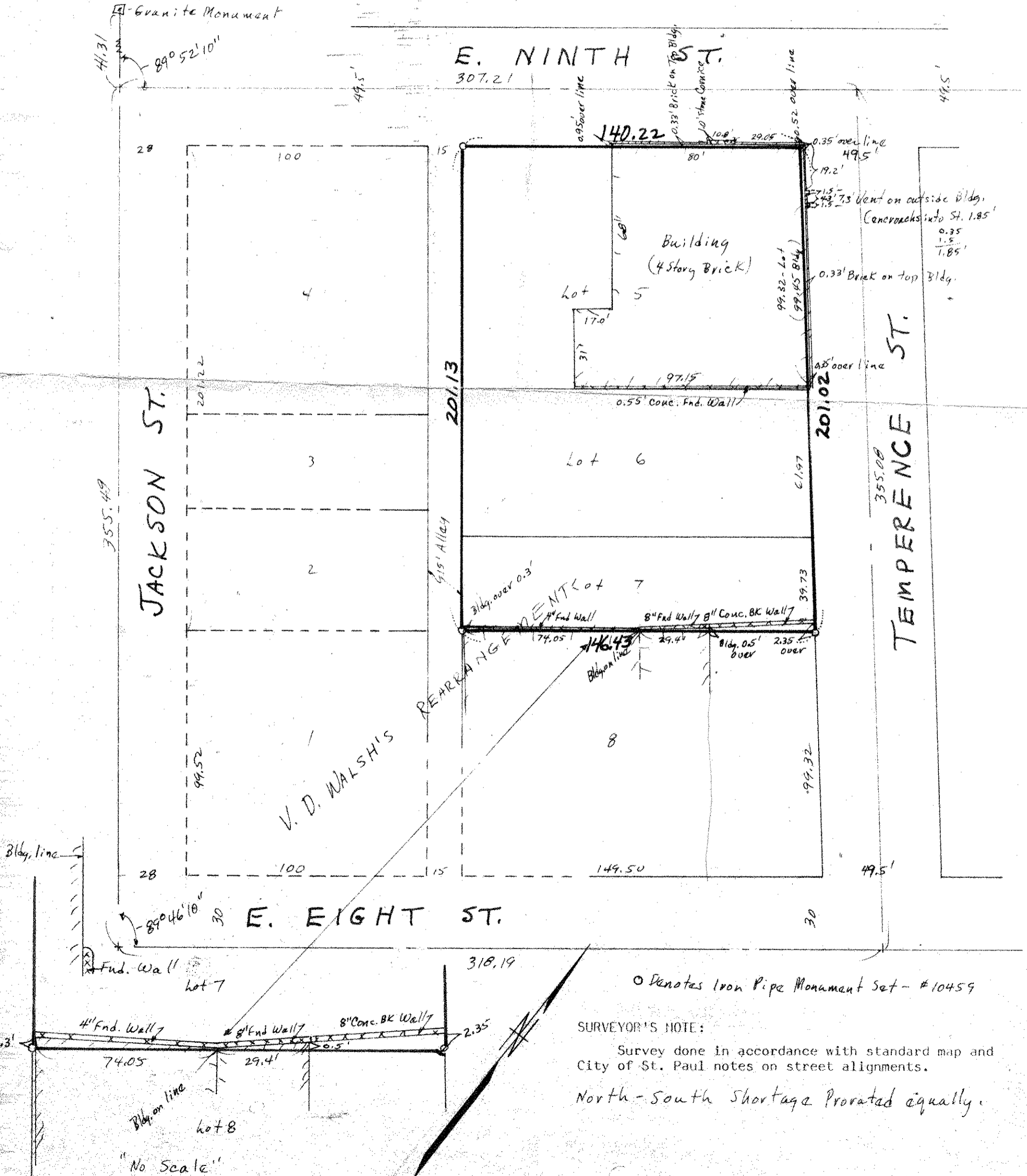
I Hereby Certify that this plat shows a survey made by me of the property described on this plat, and that the corners are correctly placed as shown, and that all locations have been correctly shown.

Job Number: 1023
 Surveyed For The Federal Land Bank of St. Paul - Donald F. Hathaway
 Date 21 August 1981
 Scale 1" = 40'

By Donald W. Schmidt
 REGISTERED LAND SURVEYOR
 Registration # 10459

DESCRIPTION:

Lots 5, 6 and 7 of V. D. Walsh's Rearrangement of Lots 1 and 2, Block 16, Robert and Randall's Addition, according to the plat thereof on file and of record in the office of the Register of Deeds within and for Ramsey County, Minnesota including any portion of any street or alley adjacent thereto, vacated or to be vacated. Subject to easements and restrictions of record.



○ Denotes Iron Pipe Monument Set - #10459

SURVEYOR'S NOTE:

Survey done in accordance with standard map and City of St. Paul notes on street alignments.

North-South Shortage Pro-rated equally.

"No Scale"