

CHARLES O. GEORGI COMPANY

2215 West County Road B

Saint Paul, Minnesota 55113

REGISTERED CIVIL ENGINEER AND LAND SURVEYOR

Certificate of Survey

I Hereby Certify that this plat shows a survey made by me of the property described on this plat, and that the corners are correctly placed as shown, and that all locations have been correctly shown.

Surveyed For Glen Woker

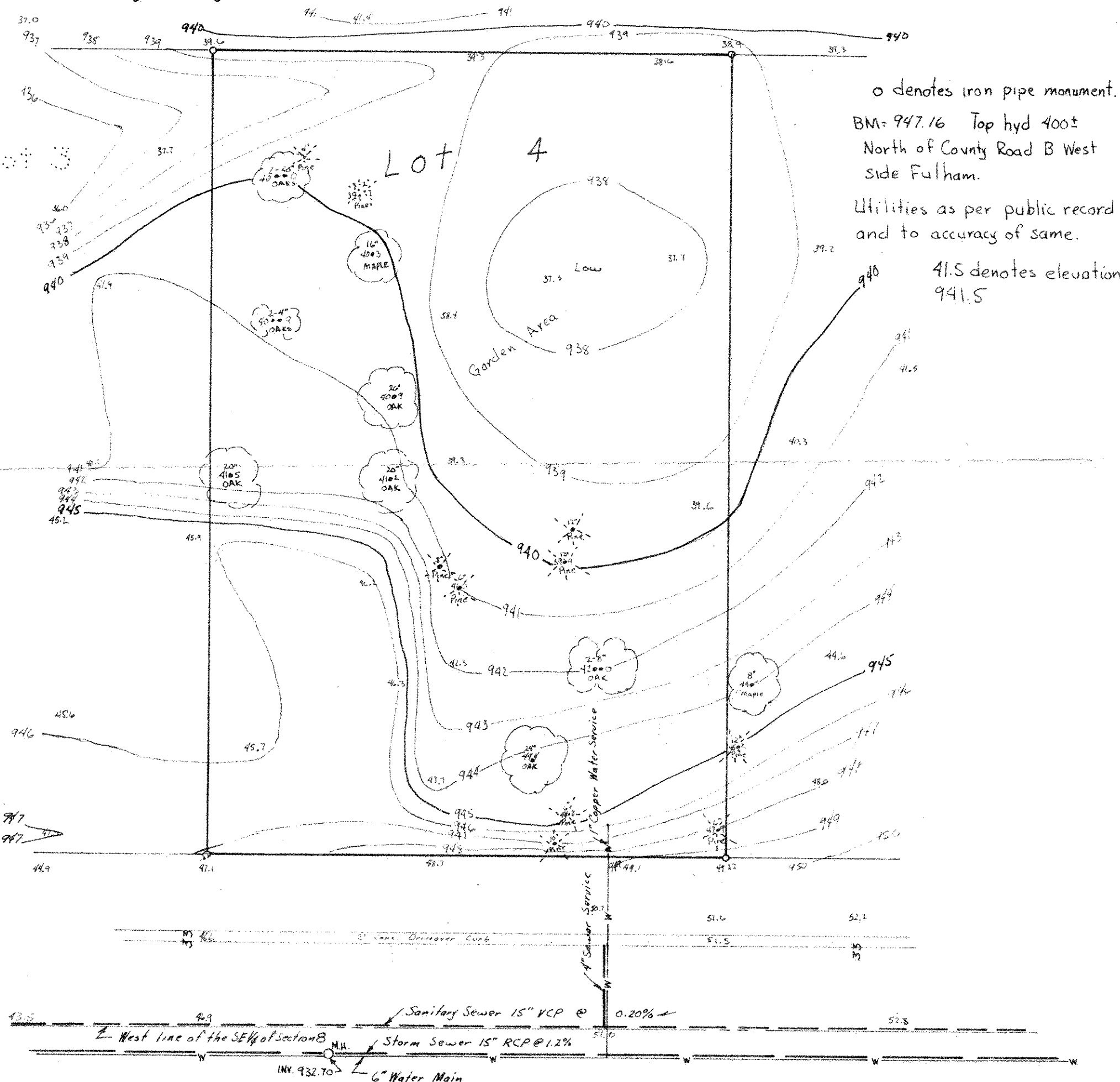
Date January 1977

Scale 1" = 20'

Description:

Lot 4,
Block 1,
Skovv Addition,
Ramsey County, Minnesota.

By Charles O. Georgi
REGISTERED LAND SURVEYOR



o denotes iron pipe monument.
 BM= 947.16 Top hyd 400±
 North of County Road B West
 side Fulham.
 Utilities as per public record
 and to accuracy of same.
 41.5 denotes elevation
 941.5

53 FULHAM ST. 53
 Power line on West side Street