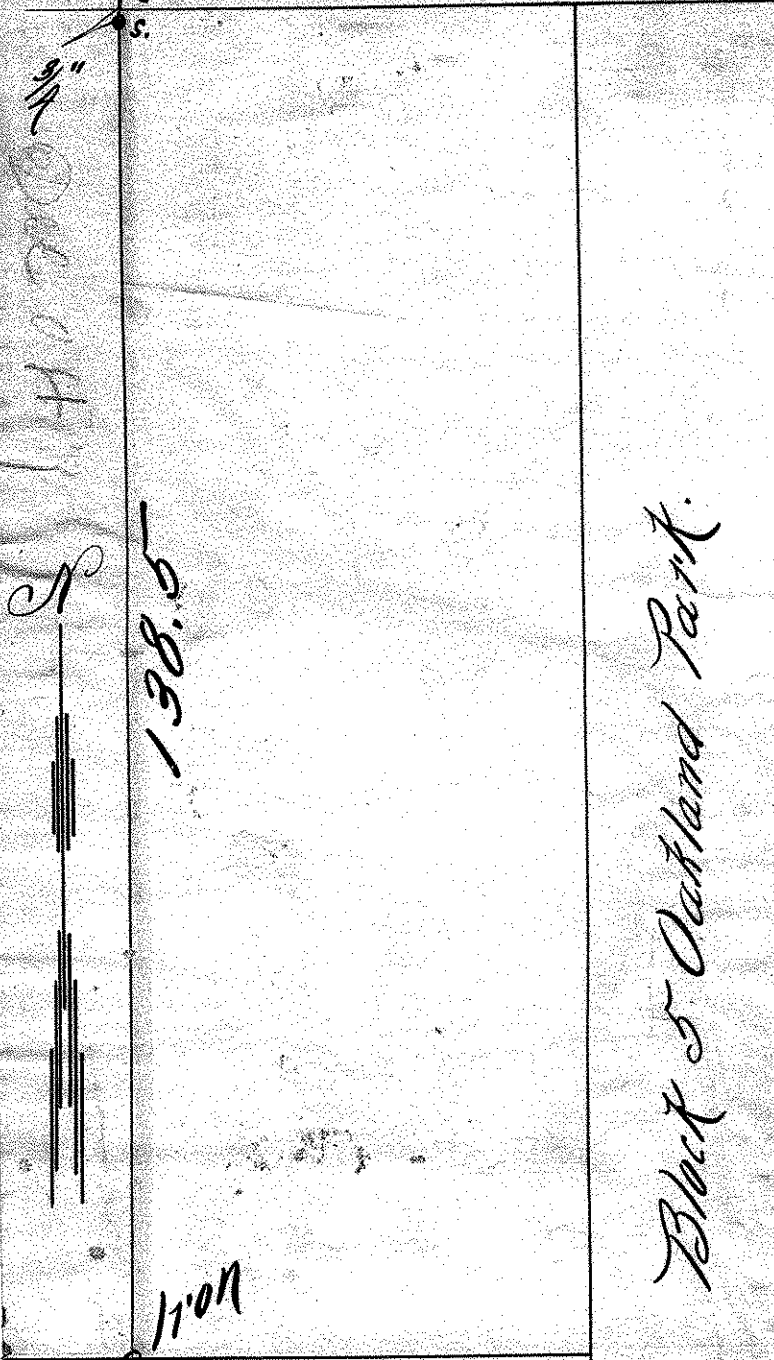


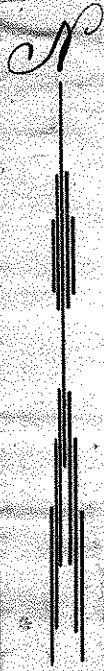
W LINE OF LOT 1 BLK 1 SKIDMORE
& CASSIDY'S PARK ADD.

MARSHALL AVE.

Cut in Walk



9 1/4"
Dashed



138.5

110ft

Alley

20

Block 5 Oakland Park.

AVE.

HEBRSCHE

Dec. 1st 1904 E. Slawik