

LOTS 10, 11 & 12 BLOCK 1.

SELBY McCLUNG & VAN METERS' ADD.

I hereby certify to having surveyed lots 10, 11 & 12 Block 1 Selby, McClung & Van Meters Add. and located the dwelling, barn & fences thereon as shown by this plat and the same is correct.

August 6-1915

John B. Irvine, Surveyor.

408 Globe Bldg.

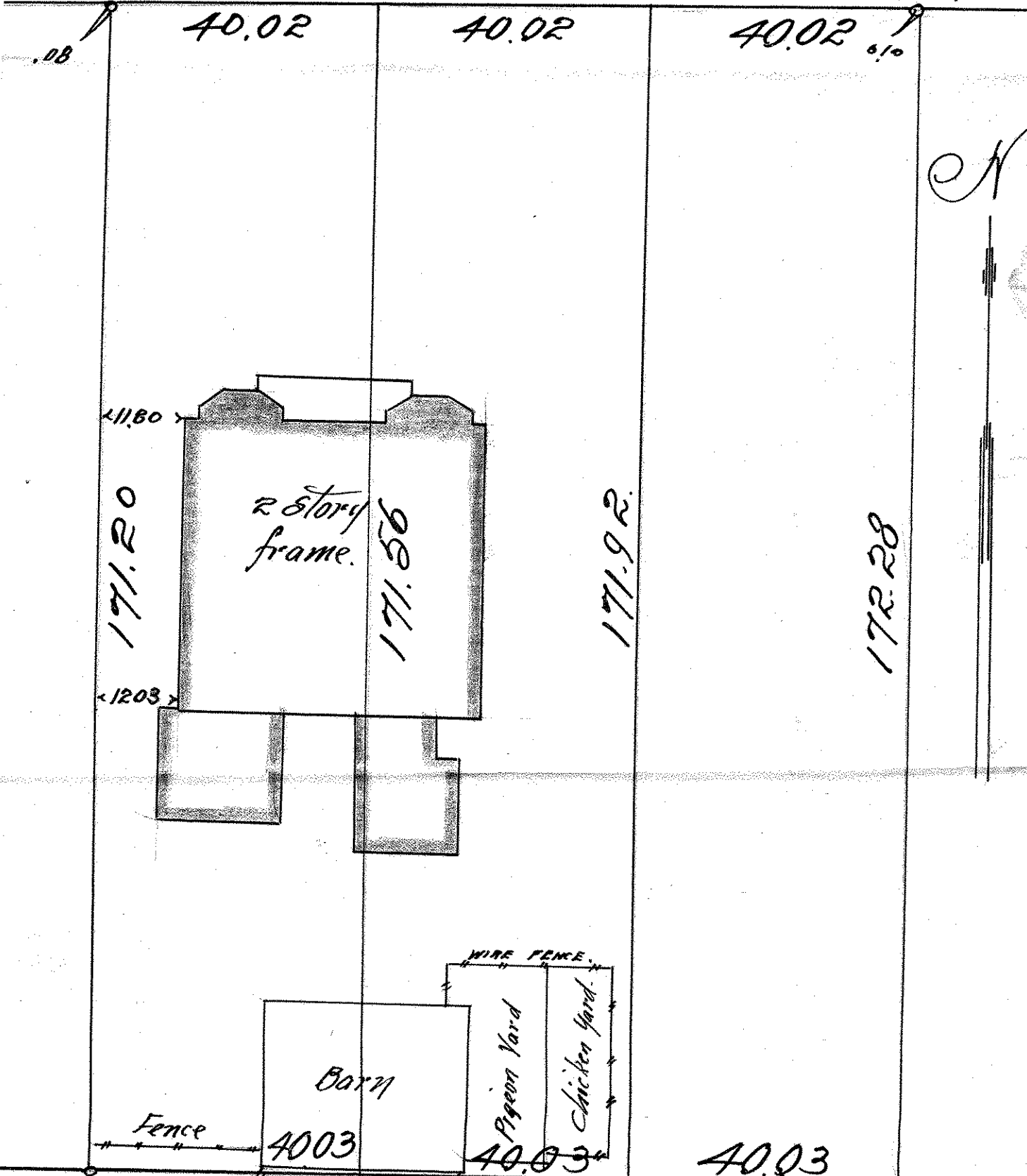
St. Paul, Minn.

MARSHALL AVE.

120.06.

Iron.

Iron.



Spike in head of brick paving

Brick Paved Alley

Spike between brick & header.