

FROM THE OFFICE OF

CHARLES O. GEORGI COMPANY

2215 West County Road B

Saint Paul, Minnesota 55113

REGISTERED CIVIL ENGINEER AND LAND SURVEYOR

Certificate of Survey

I Heresby Certify that this plat shows a survey made by me of the property described on this plat, and that the corners are correctly placed as shown, and that all locations have been correctly shown.

Project No. Minn A-1-1
Parcel No. 127-B
Area 4,649 sq. ft. m.o.l.

Surveyed For *Housing Authority*

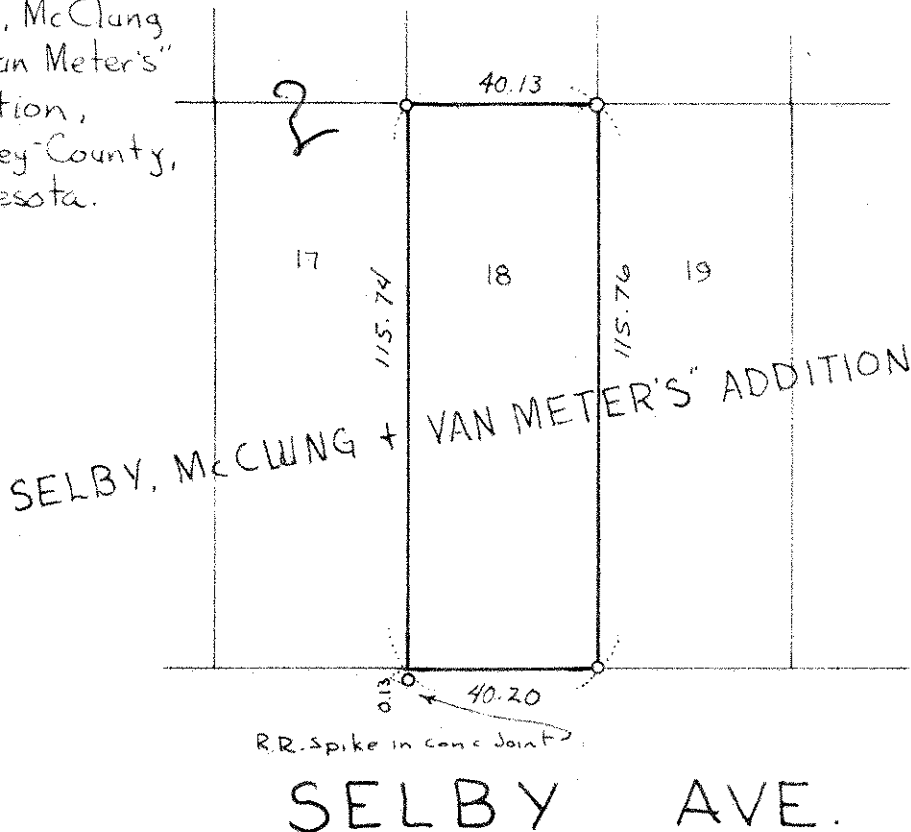
Date *January 1977*

Scale *1" = 40'*

By *Charles O. Georgi*
REGISTERED LAND SURVEYOR

Description:

Lot 18, Block 2,
Selby, McClung
and Van Meter's"
Addition,
Ramsey County,
Minnesota.



o denotes iron pipe monument.