

CHARLES O. GEORGI COMPANY

2215 West County Road B

Saint Paul, Minnesota 55113

REGISTERED CIVIL ENGINEER AND LAND SURVEYOR

Certificate of Survey

I Hereby Certify that this plat shows a survey made by me of the property described on this plat, and that the corners are correctly placed as shown, and that all locations have been correctly shown.

Project No. Minn A-1-1
Parcel No. 81-C 81-D
Area. 6161 sqft. m.a.l. Area. 6160 sqft. m.a.l.

Surveyed For Housing Authority
Date March 1973
Scale 1" = 40'

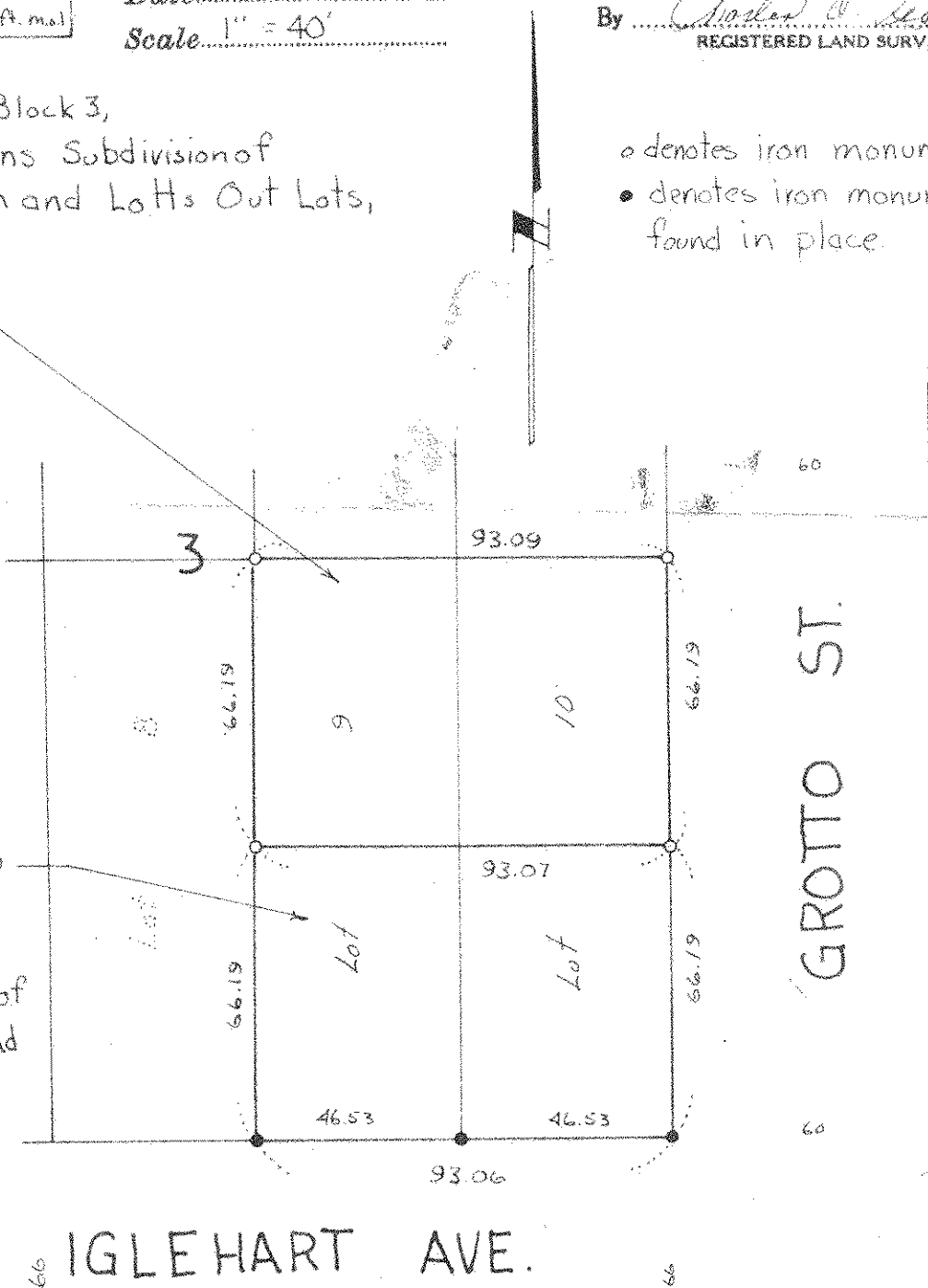
By Charles O. Georgi
REGISTERED LAND SURVEYOR

Description: 81-C

North 1/2 of lots 9 and 10, Block 3,
Scribner and Crittendens Subdivision of
Lots 8 and 13, of Smith and Lotts Out Lots,
Ramsey County,
Minnesota.

- o denotes iron monuments
- denotes iron monuments found in place.

Description parcel 81-D
South 1/2 of lots 9 and 10,
Block 3, Scribner and
Crittendens Subdivision of
Lots 8 and 13 of Smith and
Lotts Out Lots
Ramsey County,
Minnesota.



IGLEHART AVE.

GROTTO ST.