

FROM THE OFFICE OF

# CHARLES O. GEORGI COMPANY

2215 West County Road B

Saint Paul, Minnesota 55113

REGISTERED CIVIL ENGINEER AND LAND SURVEYOR

## Certificate of Survey

I Hereby Certify that this plat shows a survey made by me of the property described on this plat, and that the corners are correctly placed as shown, and that all locations have been correctly shown.

Project No. Minn A-1-1  
Parcel No 93-D  
Area 8,240 sq. ft. m.o.l.

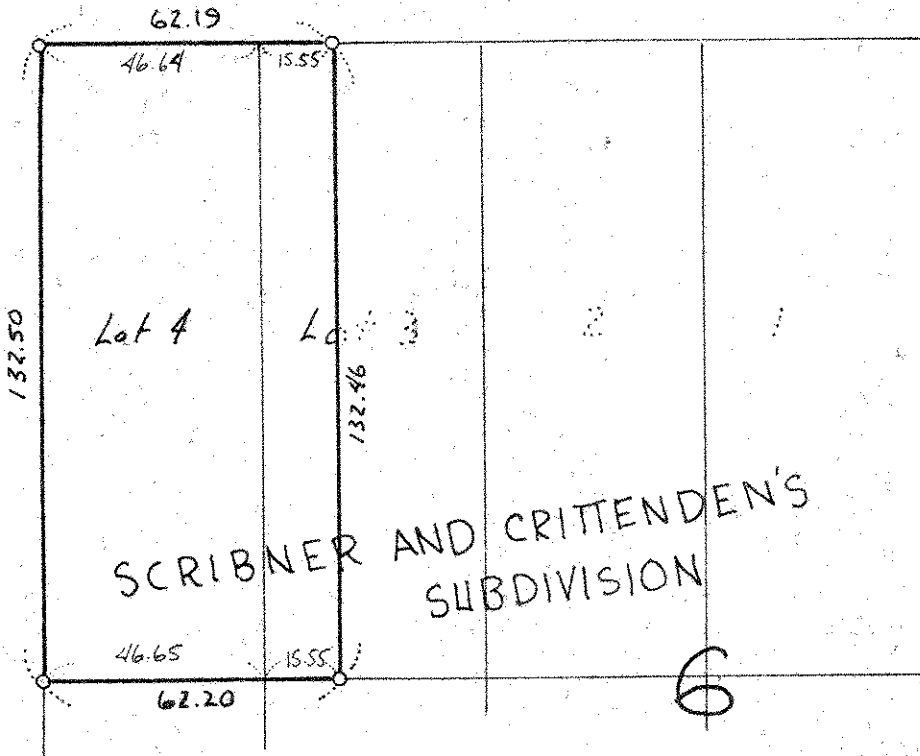
Surveyed For *Housing Authority*  
Date *April 1975*  
Scale *1" = 40'*

By *Charles O. Georgi*  
REGISTERED LAND SURVEYOR

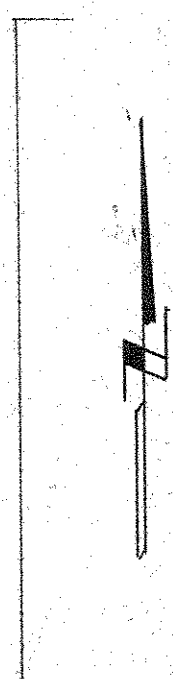
**Description:**

Lot 4 and the West 15.55 feet of lot 3, Block 6,  
Scribner and Crittenden's Subdivision of lots  
8 and 13 of Smith and Lot's Out Lots, Ramsey County,  
Minnesota.

66 IGLEHART AVE. 66



60 GROTTO ST. 60



denotes iron pipe monument.