

FROM THE OFFICE OF

CHARLES O. GEORGI COMPANY

2215 West County Road B

Saint Paul, Minnesota 55113

REGISTERED CIVIL ENGINEER AND LAND SURVEYOR



Certificate of Survey

I Hereby Certify that this plat shows a survey made by me of the property described on this plat, and that the corners are correctly placed as shown, and that all locations have been correctly shown.

Project No. Minn A-1-1
Parcel No 93-C
Area 8,237 sq. ft. m.o.l.

Surveyed For... Housing Authority
Date... April 1975
Scale... 1" = 40'

By *Charles O. Georgi*
REGISTERED LAND SURVEYOR

Description:

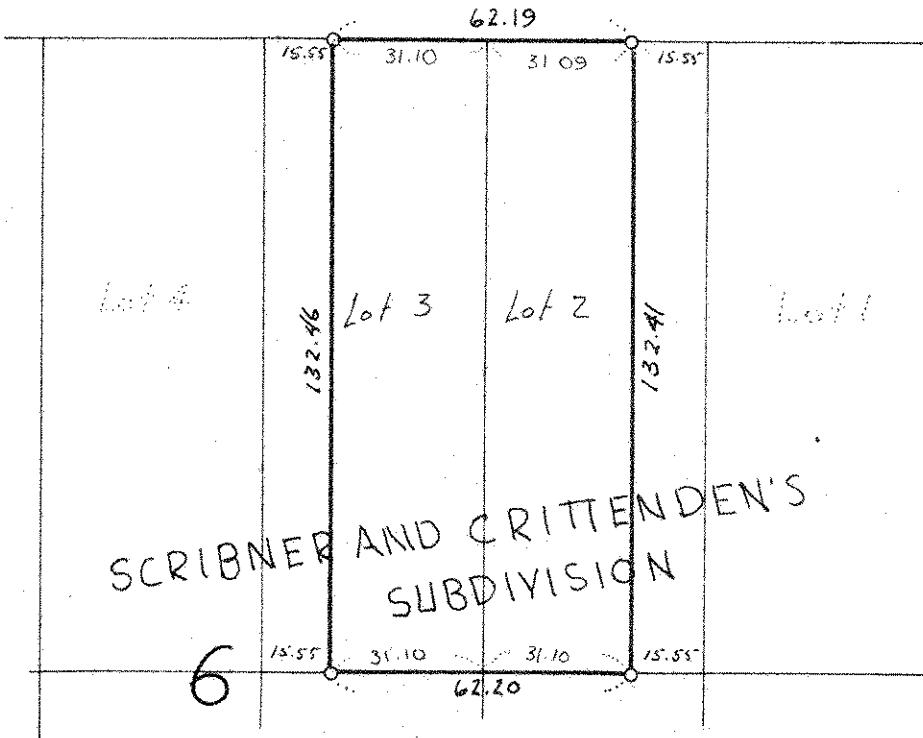
Lot 2 except the East 15.55 feet and
Lot 3 except the West 15.55 feet, Block 6,
Scribner and Crittenden's Subdivision of
lots 8 and 13 of Smith and Lotts Out lots
Ramsey County, Minnesota.

60

IGLEHART AVE

66

66



60

GROTTO ST.

