

CHARLES O. GEORGI COMPANY

2215 West County Road B

Saint Paul, Minnesota 55113

REGISTERED CIVIL ENGINEER AND LAND SURVEYOR

Certificate of Survey

I Hereby Certify that this plat shows a survey made by me of the property described on this plat, and that the corners are correctly placed as shown, and that all locations have been correctly shown.

Project No. Minn A-1-1

Parcel No. ~~88~~ 81B

Area, 4,633 sq ft more or less

Surveyed For Housing Authority

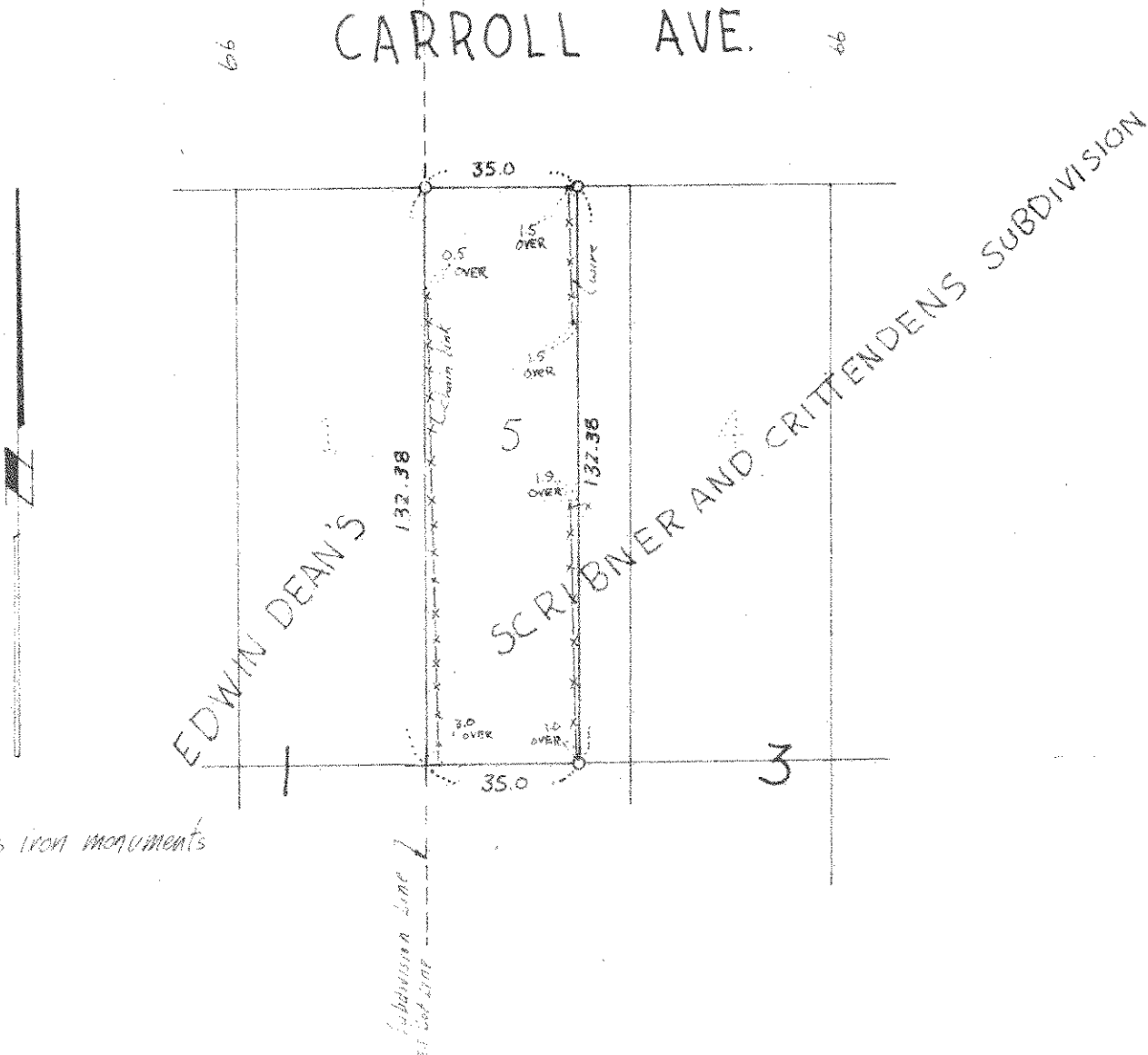
Date April 1974

Scale 1" = 40'

By Charles O. Georgi
REGISTERED LAND SURVEYOR

Description:

The West 35 feet of lot 5, Block 3,
Scribner and Crittendens Subdivision of Lots 8 and 13
of Smith and Lotts Out Lots,
Ramsey County,
Minnesota.



o denotes iron monuments