

FROM THE OFFICE OF

CHARLES O. GEORGI COMPANY

2215 West County Road B

Saint Paul, Minnesota 55113

REGISTERED CIVIL ENGINEER AND LAND SURVEYOR

Certificate of Survey

I Hereby Certify that this plat shows a survey made by me of the property described on this plat, and that the corners are correctly placed as shown, and that all locations have been correctly shown.

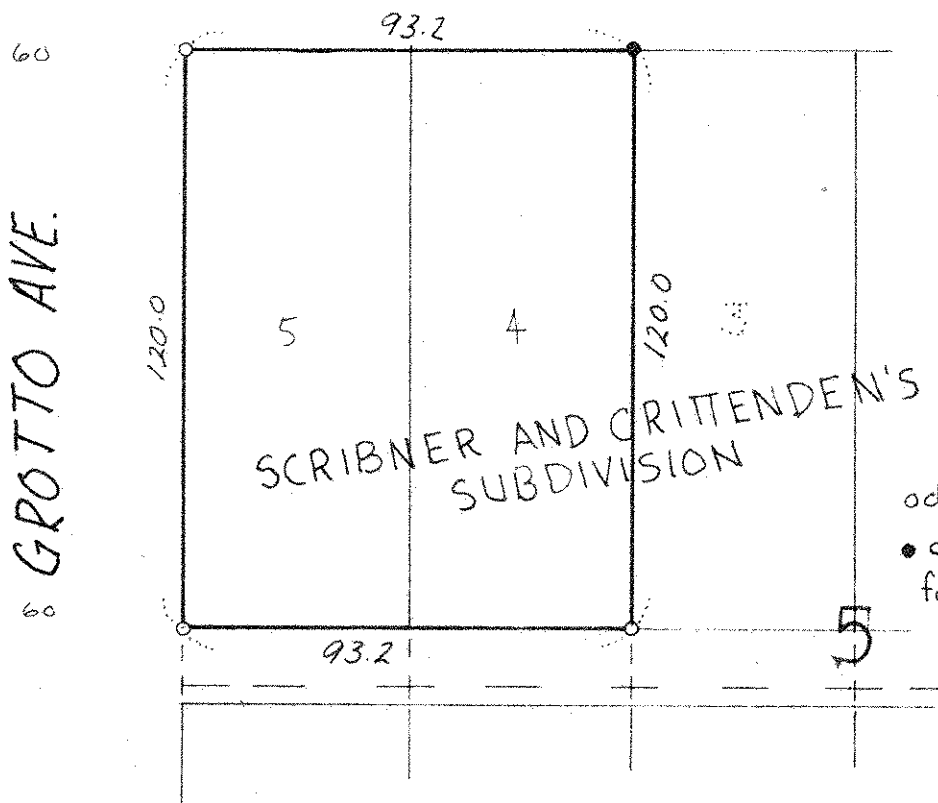
Project No. Minn A-1-1
Parcel No. 94G
Area. 11,184 sq. ft. m.o.l.

Surveyed For Housing Authority
Date April 1975
Scale 1" = 40'

By Charles O. Georgi
REGISTERED LAND SURVEYOR

Description: Block 2
Lot 4 and lots 5, Scribner and Crittenden's Subdivision
of lots 8 and 13 of Smith and Lotts Out Lots,
Ramsey County, Minnesota

IGLEHART AVE



o denotes iron monument
● denotes iron monument found in place