

FROM THE OFFICE OF

CHARLES O. GEORGI COMPANY

2215 West County Road B

Saint Paul, Minnesota 55113

REGISTERED CIVIL ENGINEER AND LAND SURVEYOR

Certificate of Survey

I Heroby Certify that this plat shows a survey made by me of the property described on this plat, and that the corners are correctly placed as shown, and that all locations have been correctly shown.

C.D. District No. 8
Parcel No. 81-G
Area: 8174 Sq. Ft., M.O.L.

Surveyed For Housing Authority

Date August 1977

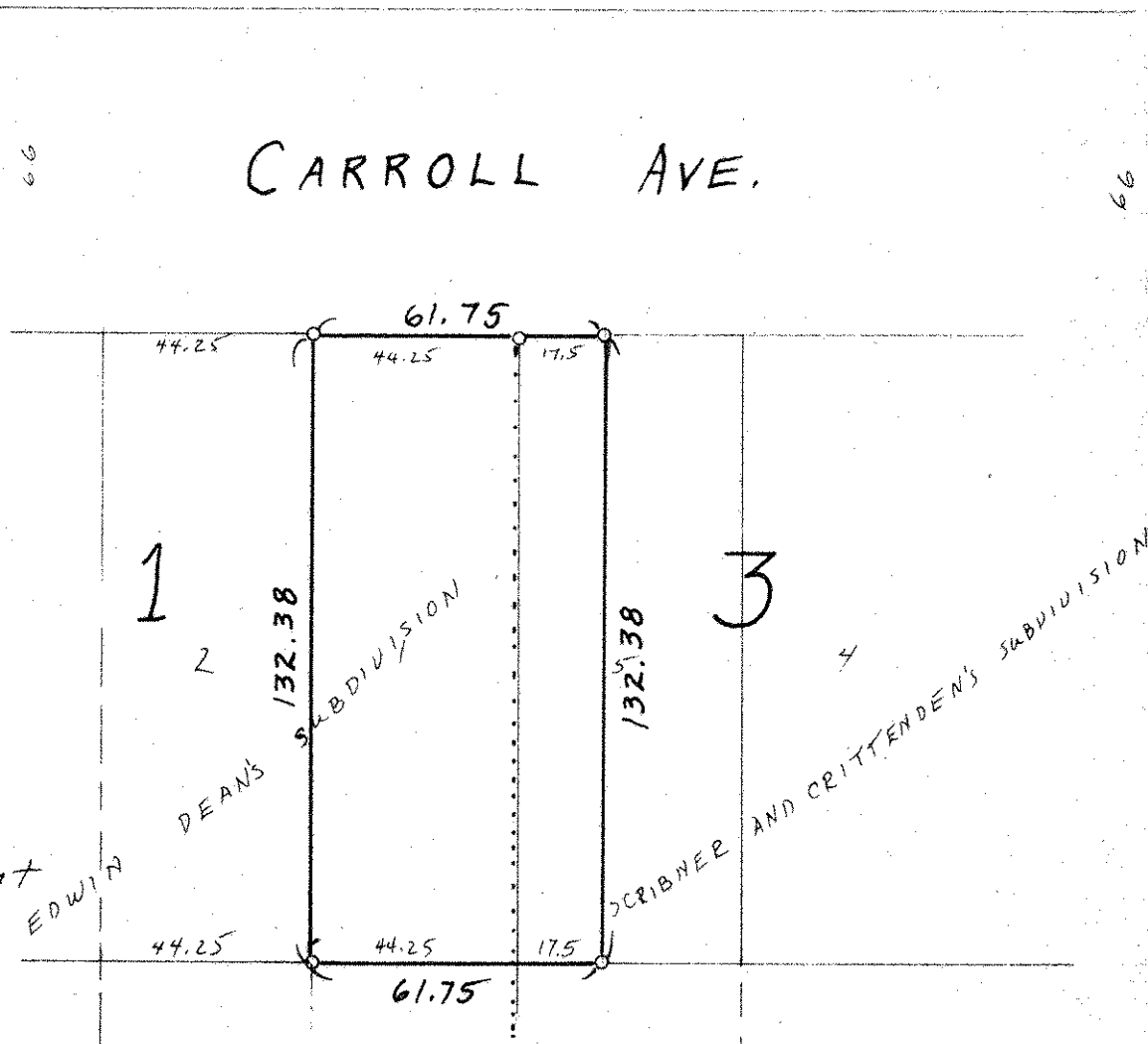
Scale 1" = 40'

By Charles O. Georgi
REGISTERED LAND SURVEYOR

Description:

Lot 1, Block 1, Edwin Dean's Subdivision of Part of Smith and Lott's Outlots, and The West 17.5 Feet of Lot 5, Block 3, Scribner and Crittendens Subdivision of Lots 8 and 13 of Smith and Lott's Outlots.

Ramsey County, Minnesota



o Denotes Iron Monument