

CHARLES O. GEORGI COMPANY

2215 West County Road B

Saint Paul, Minnesota 55113

REGISTERED CIVIL ENGINEER AND LAND SURVEYOR

Certificate of Survey

I Hereby Certify that this plat shows a survey made by me of the property described on this plat, and that the corners are correctly placed as shown, and that all locations have been correctly shown.

Surveyed For T. Montan

Date December 1969

Scale 1" = 30'

By Charles O. Georgi
REGISTERED LAND SURVEYOR

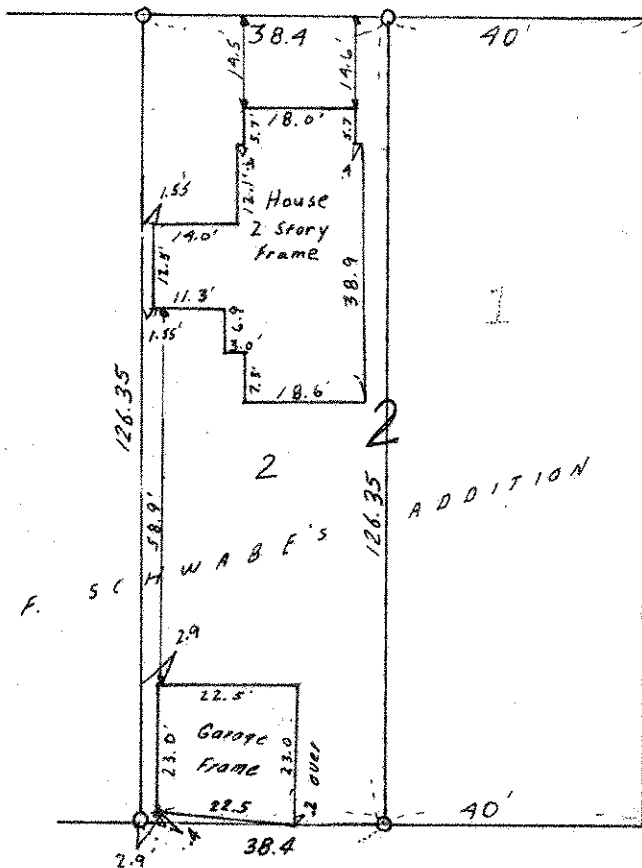
Description:

Lot 2,
Block 2,
H. F. Schwabe's Addition
Ramsey County Minn'

EUCLID ST.

60'

60'



FRANK ST.
(Not Graded)

60'

○ Denotes Iron Monument