

SOUTH 34 ft. of NORTH 72 ft.  
LOTS 1 & 2 & EAST 9.14 ft. LOT 3

BLOCK 1.

SCHURMEIER & EVAN'S ADD.

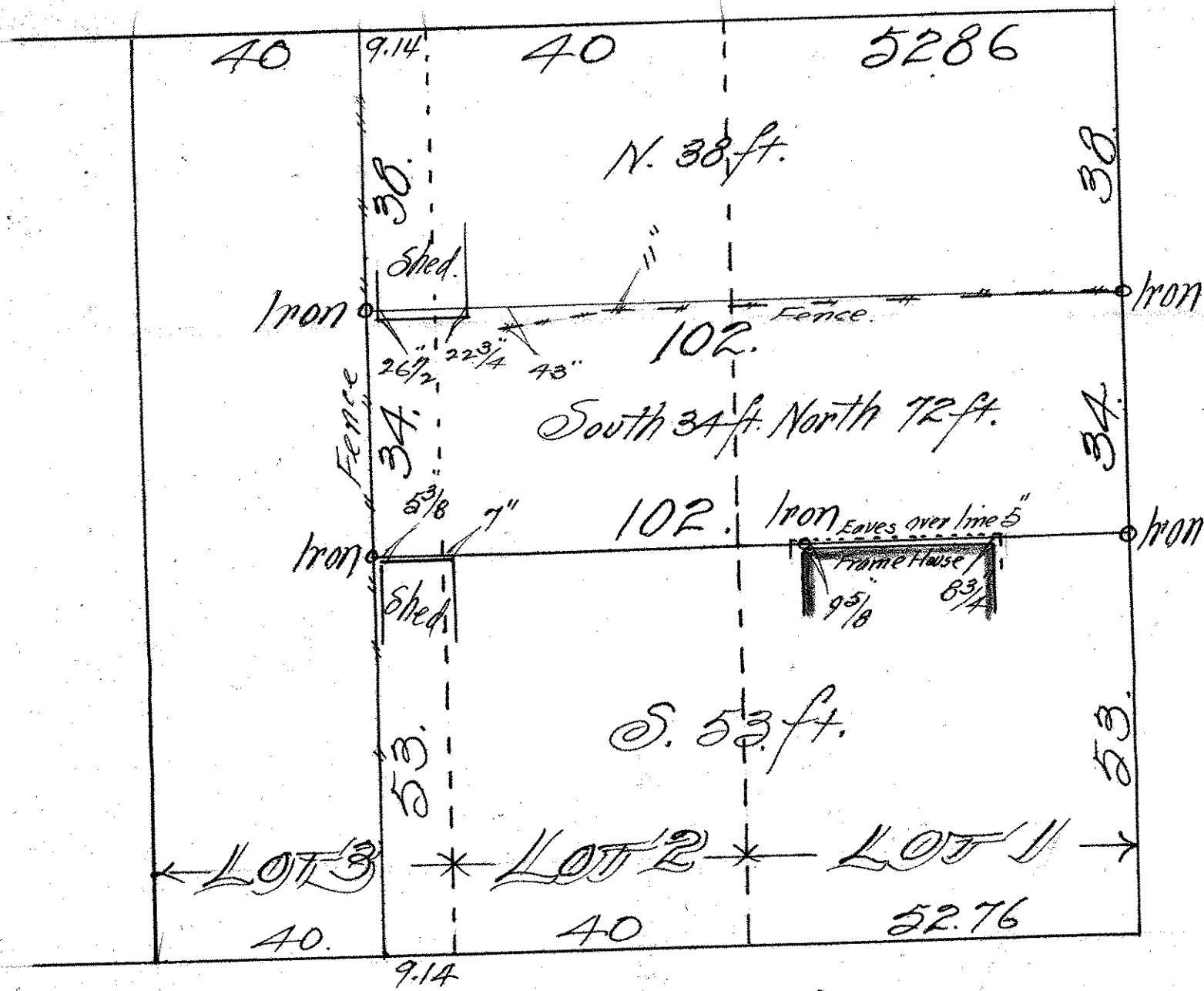
John B. Irvine, Surveyor.

June 1st 1921

Scale 20 ft. per. inch.

MINNEAPOLIS

ST.



HOPE

ALLEY 20