

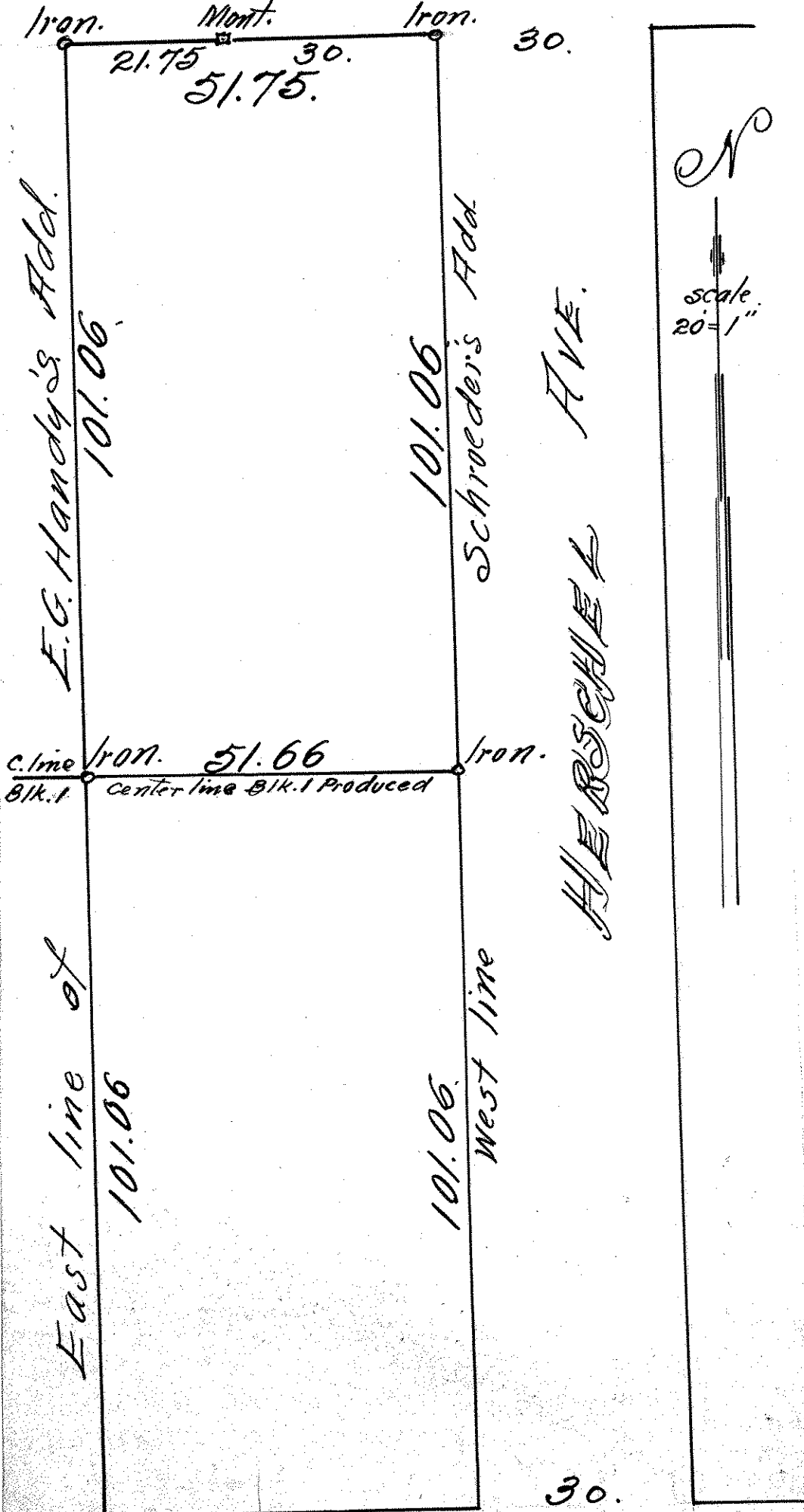
A MISCELLANEOUS TRACT OF
LAND IN THE N.E. 1/4 OF SEC. 4
TOWN 28 RANGE 23.

South of Hague Ave. & West of the
 west line of Schroeder's Add.,
 east of the east line of E.G. Handy's
 addition & north of the east & west
 center line of Block 1. E.G. Handy's
 addition produced east to the
 west line of Schroeder's Addition.

JOHN B. IRVINE, SURVEYOR.

JUNE 24-1914.

HAGUE AVE.



scale
 20' = 1"

LAUREL AVE.