

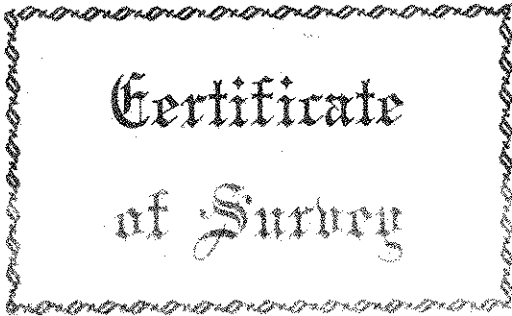
FROM THE OFFICE OF

CHARLES O. GEORGI COMPANY

2215 West County Road B

Saint Paul, Minnesota 55111

REGISTERED CIVIL ENGINEER AND LAND SURVEYOR



I Herby Certify that this plat shows a survey made to me of the property described on this plat, and that the corners are correctly placed on the ground and that all locations have been correctly shown.

Surveyed for Dorothy Rudh

1514 York Ave

Date December, 1970

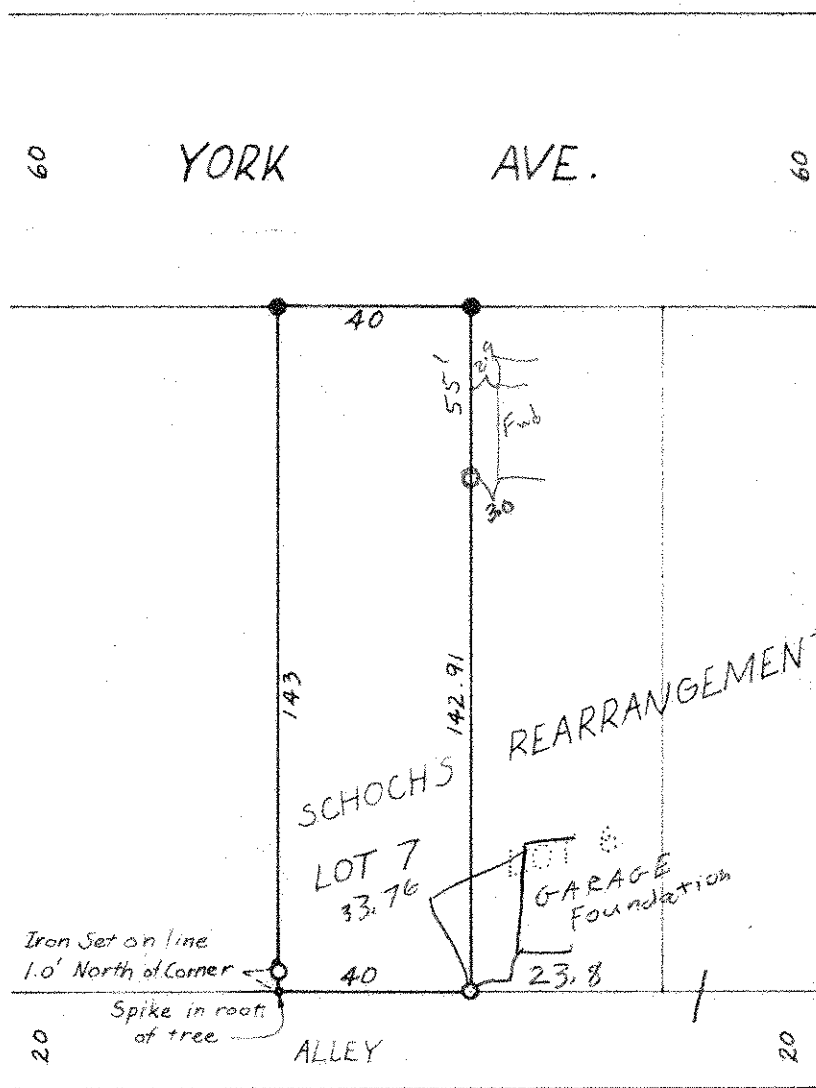
Scale 1" = 40'

By Charles O. Georgi
REGISTERED CIVIL ENGINEER AND LAND SURVEYOR

Description:

Lot 7, Block 1, Schoch's Rearrangement,
St. Paul, Ramsey County, Minnesota.

4/72 relocate see record cert.



- Denotes Iron Pipe Monument
- Denotes Iron Pipe Monument found in place