

Certificate of Survey

From the office of
GEORGI-SCHMIDT & ASSOC. INC.
3092 No. Lexington Ave., Roseville, Mn. 55113
LAND SURVEYING
483-4408

I Hereby Certify that this plat shows a survey made by me of the property described on this plat, and that the corners are correctly placed as shown, and that all locations have been correctly shown.

Job Number: 40

Surveyed For Hughes Const.

Date July 7-1978

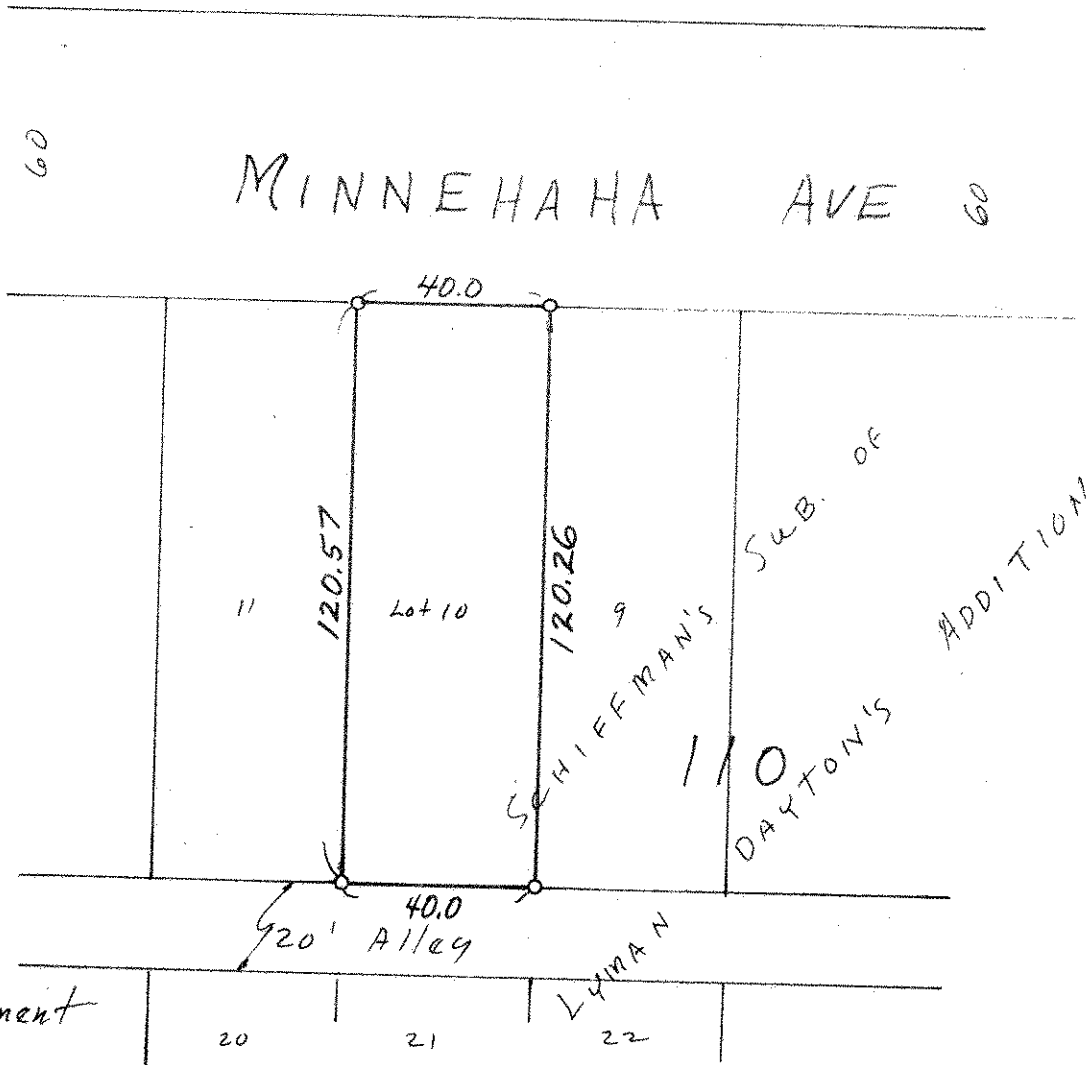
Scale 1"=40'

By Donald W Schmidt
REGISTERED LAND SURVEYOR

Description:

Lot 10, Schiffmann's Subdivision of
Block 110, Lyman Dayton's Addition.

Ramsey County, Mn.



o Denotes Iron Monument