

FROM THE OFFICE OF

# CHARLES O. GEORGI COMPANY

2215 West County Road B

Saint Paul, Minnesota 55113

REGISTERED CIVIL ENGINEER AND LAND SURVEYOR

## Certificate of Survey

I Hereby Certify that this plat shows a survey made by me of the property described on this plat, and that the corners are correctly placed as shown, and that all locations have been correctly shown.

Surveyed For *Peter Förlén*

Date *May 1915*

Scale *1"=40'*

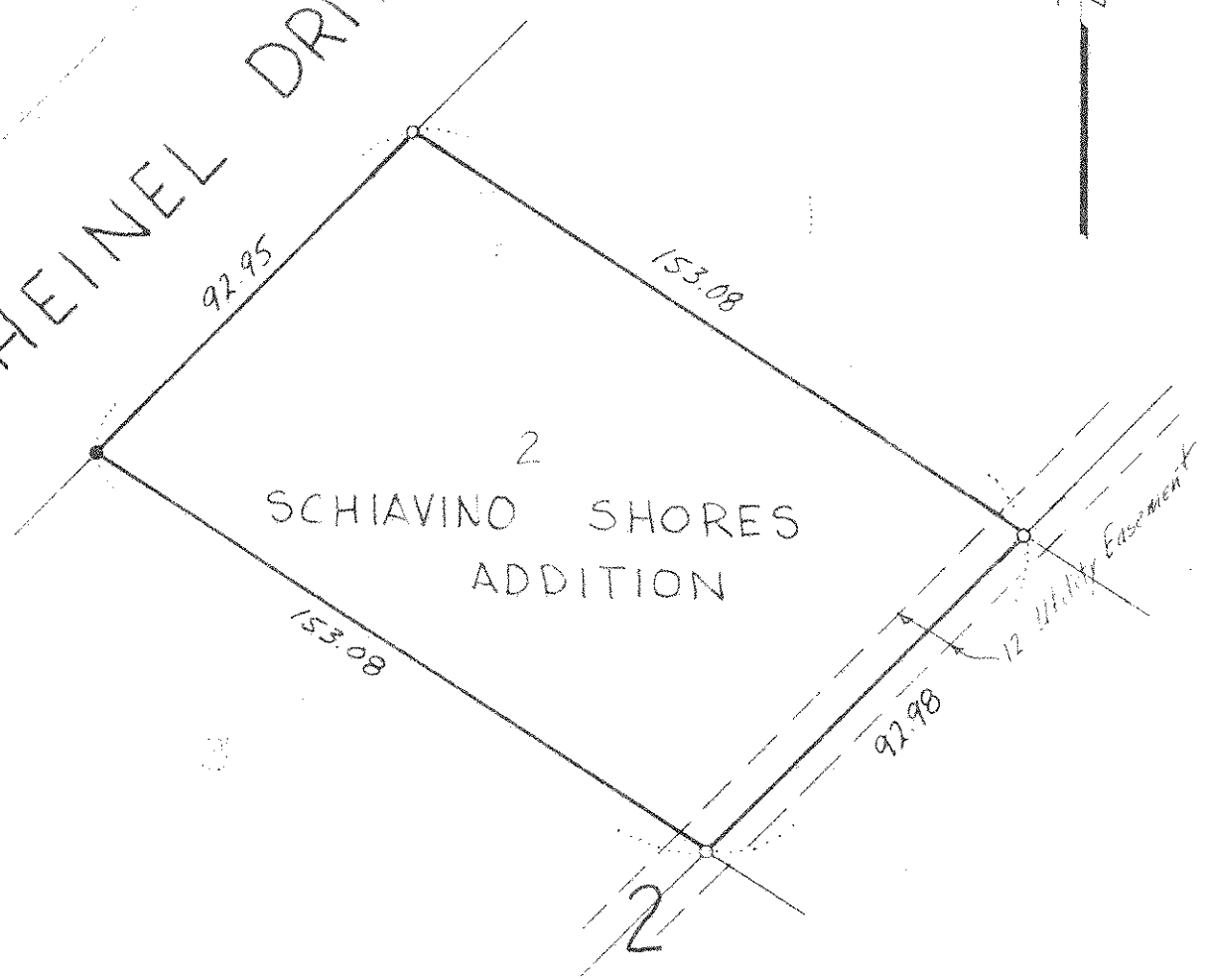
By *Charles O. Georgi*  
REGISTERED LAND SURVEYOR

**Description:**

Lot 2  
Block 2  
Schiavino Shores Addition,  
Ramsey County,  
Minnesota.

*o denotes iron monument*  
*• denotes iron monument found in place*

HEINEL DRIVE



2

SCHIAVINO SHORES  
ADDITION

12' Utility Easement

2