

CHARLES O. GEORGI COMPANY

2215 West County Road B

Saint Paul, Minnesota 55113

REGISTERED CIVIL ENGINEER AND LAND SURVEYOR



Certificate of Survey

I Hereby Certify that this plat shows a survey made by me of the property described on this plat, and that the corners are correctly placed as shown, and that all locations have been correctly shown.

Surveyed For Housing Authority

Date September, 1971

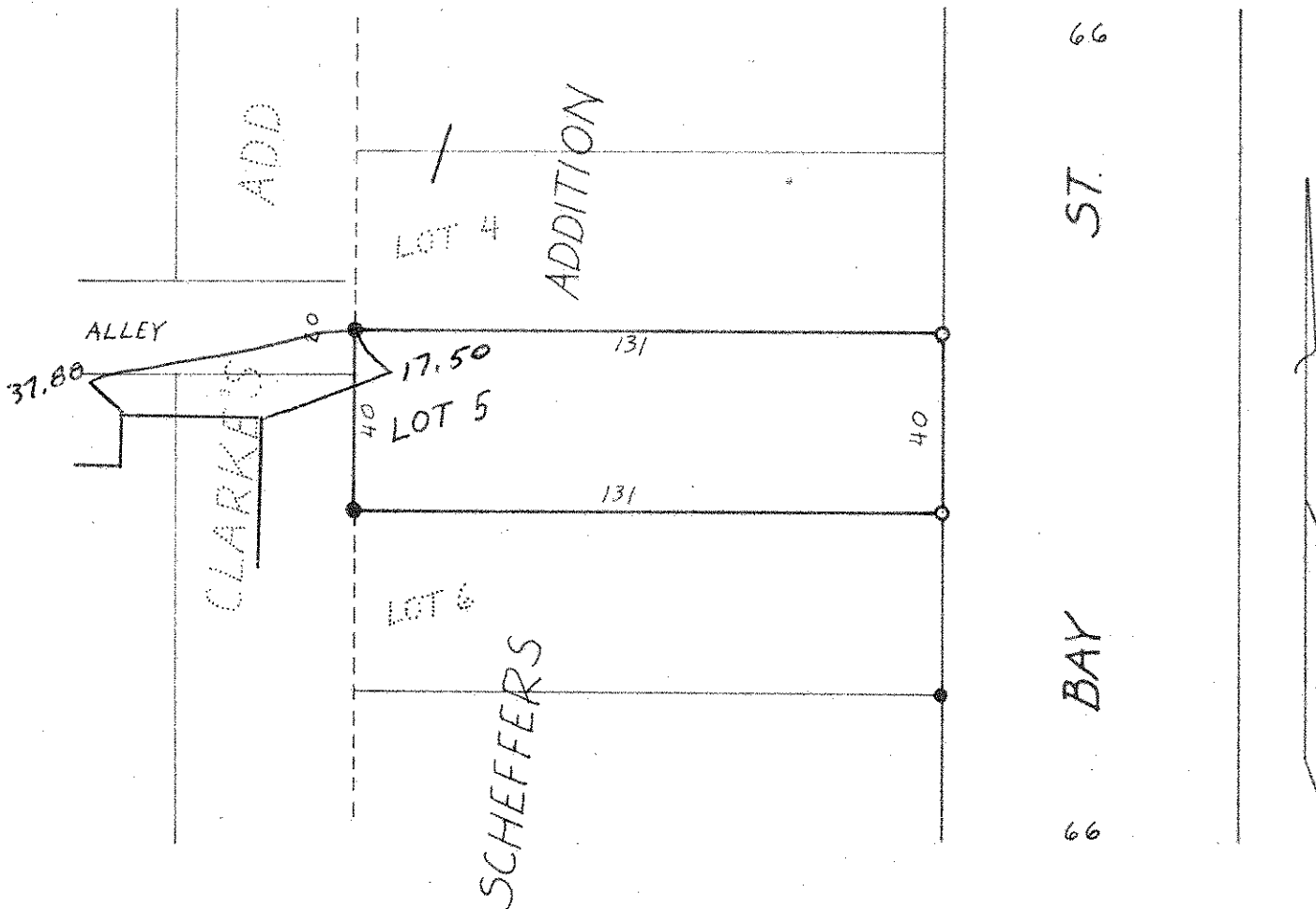
Scale 1" = 40'

By Charles O. Georgi
REGISTERED LAND SURVEYOR

#497 Bay St.

Description:

Lot 5, Block 1, Scheffers Addition to St. Paul,
Ramsey County, Minnesota.



- Denotes Iron Pipe Monument
- Denotes Iron Pipe Monument found in place