

# CHARLES O. GEORGI COMPANY

2215 West County Road B

Saint Paul, Minnesota 55113

REGISTERED CIVIL ENGINEER AND LAND SURVEYOR

## Certificate of Survey

I Hereby Certify that this plat shows a survey made by me of the property described on this plat, and that the corners are correctly placed as shown, and that all locations have been correctly shown.

Surveyed For *Construction 70 - Zapata*

Date *December 27, 1912*

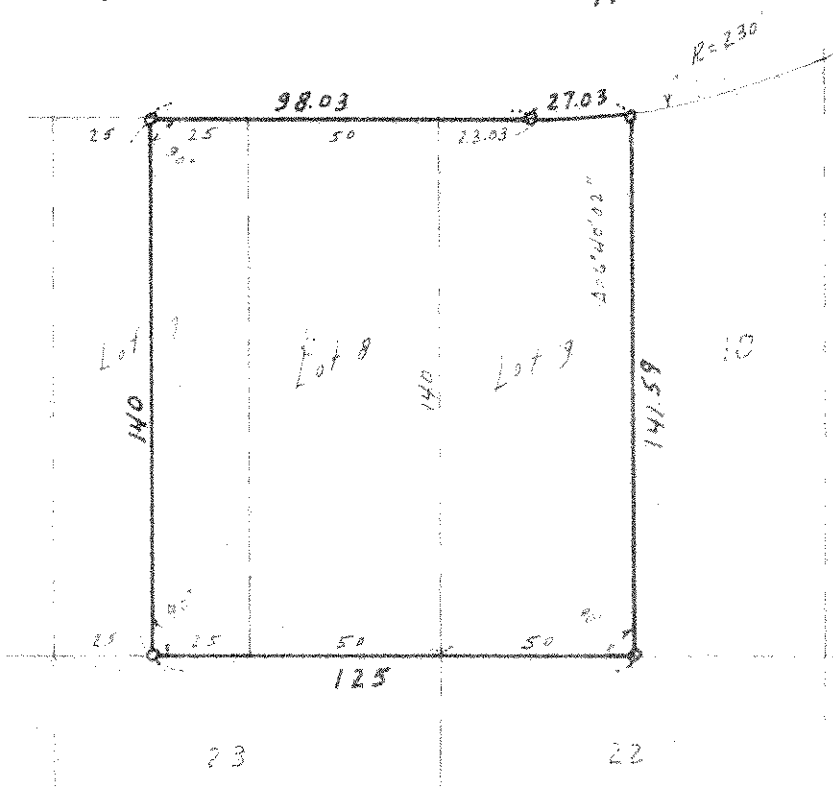
Scale *1" = 50'*

By *Charles O. Georgi*  
REGISTERED LAND SURVEYOR

**Description:**

*The Eastern 15 feet of Lot 7, and Lots 8 and 9,  
Block 20,  
Scenic Hills No. 5  
St. Paul, Ramsey County, Minn*

*SUBURBAN 3 AVE.*



*o Denotes Iron Pipe monument.*