

FROM THE OFFICE OF

# CHARLES O. GEORGI COMPANY

2215 West County Road B. Saint Paul, Minnesota 55113

REGISTERED CIVIL ENGINEER AND LAND SURVEYOR



I Herby Certify that this plat shows a <sup>preliminary plat</sup> survey made by me of the property described on this plat, and that the corners are correctly placed as shown, and that all locations have been correctly shown.

Revise 7-25-78

Surveyed For Sunrise Bldgs.

Date August 1977

Scale 1"=100'

North line of NW 1/4, Section 35, T30, R22

By

*Charles O. Georgi*  
REGISTERED LAND SURVEYOR

Preliminary Plat

## SANDRA PARK

CITY OF WHITE BEAR LAKE  
RAMSEY COUNTY, MINN.

owner:  
Orville Erikson  
Sunrise Bldgs. Inc.  
2112 Blomquist  
White Bear Lake, Minn  
424-4740 55110

Description: (per owner)- needs verification  
Lot 9, except the North 280 feet  
of the East 135 feet thereof; and  
Lot 10 except the North 280 feet  
thereof lying West of the East 30 feet thereof  
Elmwood Garden Farms, Ramsey County,  
Minn. Subject to easements of record.  
Area = 7.3 Ac, more or less.

Zoning:  
Residential - Single Family

Lot Sizes:  
Min. Width = 95' @ 1/4 mile line  
@ 1/4 mile = 149.5 x 95'  
Min Lot Area = 14,102 sq. ft.  
B.M. = 957.68 Top of NE Corner  
of County Road #4 & Highland.  
B.M. = 950.35 Spike in power pole  
South side of Elm.

57.7 Denotes elevation 957.7  
USGS Datum & City Datum.

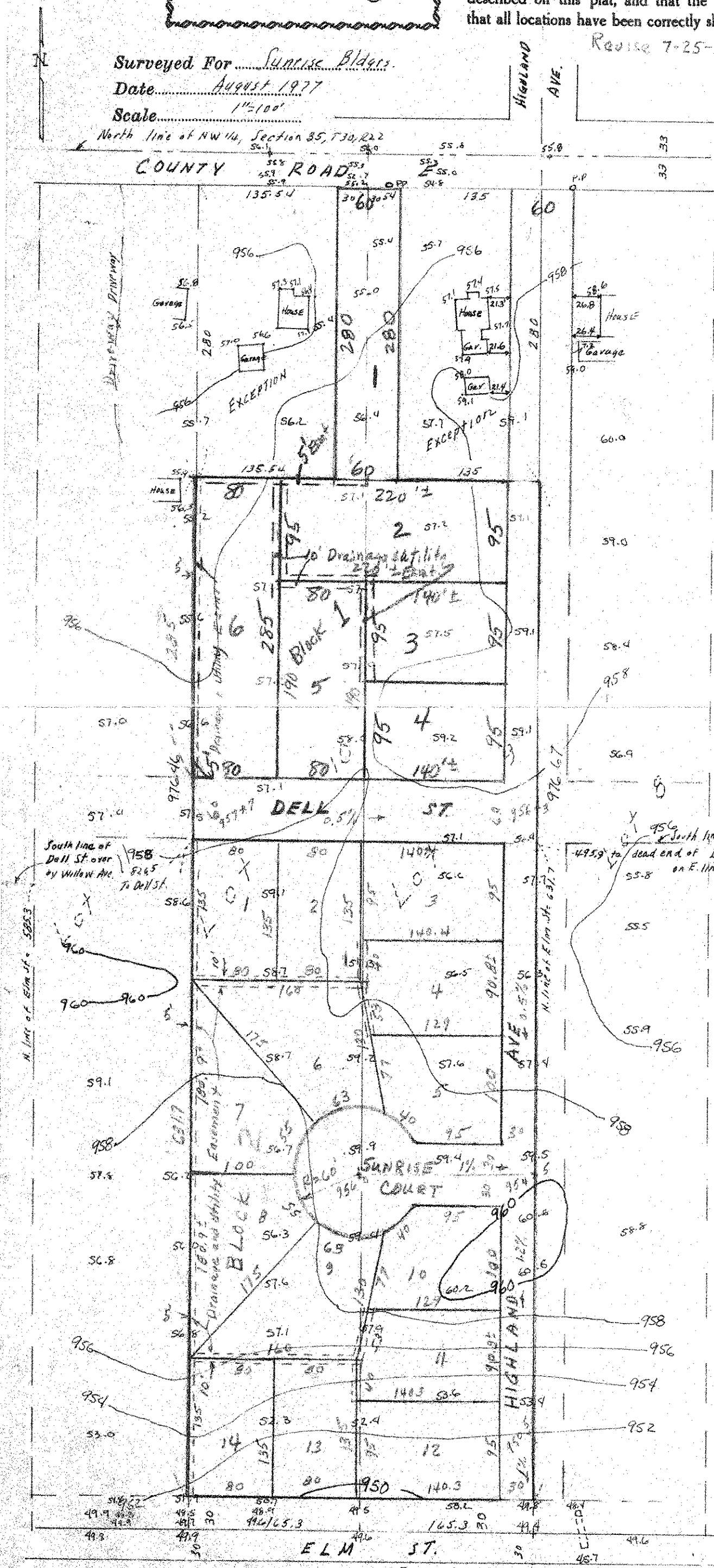
Roads: 75.0+0 1% = 95.75 denotes  
feasible approx. road elevations  
and grades, however City Engr will  
modify to fit master road plan and  
storm drainage system in area.  
Detail streets as shown.

Drainage:  
Good to South on South part.  
Provide Easements as shown or as  
indicated by City Engr.

Utilities:  
Provide as shown for overhead lines  
as exist in area unless N.E. of City Engr  
to go underground in 10' Easmt above St. Elm.  
For sewer & water extension to this area,  
see master plan of area by City Engr.

CITY APPROVAL requested to plat  
lots as shown

Sheet 1 - 1  
Block 2 - 0  
Block 3 - 14  
Total = 25 lots



Opp. B.M. = 950.35