

CHARLES O. GEORGI COMPANY

2215 West County Road B

Saint Paul, Minnesota

MINNESOTA REGISTERED LAND SURVEYOR

Certificate of Survey

I hereby certify that this plat shows a survey made by me of the property described on this plat, and that the corners are correctly placed as shown, and that all locations, encroachments, etc., have been correctly shown.

Map No. 117
Map No. I & III
Areas see below
with description

Surveyed For Housing Authority
Date November 1972
Scale 1" = 50'

By Charles O. Georgi
REGISTERED LAND SURVEYOR

DESCRIPTION:

(Parcel I) Lots 1 thru 6, Block 23, E.H. Hawkes Subdivision to Winslow's Addition to St. Paul

Contains: 46,690 Sq. Ft. m.e., or 1.072 Acres m.e.

(Parcel II) Lots 1 thru 16, Block 2, Grace's Subdivision to Willa's Addition to St. Paul

Contains: 67,920 Sq. Ft. m.e., or ~~1.55~~ 1.605 Acres m.e. 11/22/72

(Parcel III) Lots 1 thru 6, Block 3, Willa's Addition to St. Paul

Contains: 70,020 Sq. Ft. m.e., or 1.607 Acres m.e.

Parcel's I, II, and III, and included bounded streets

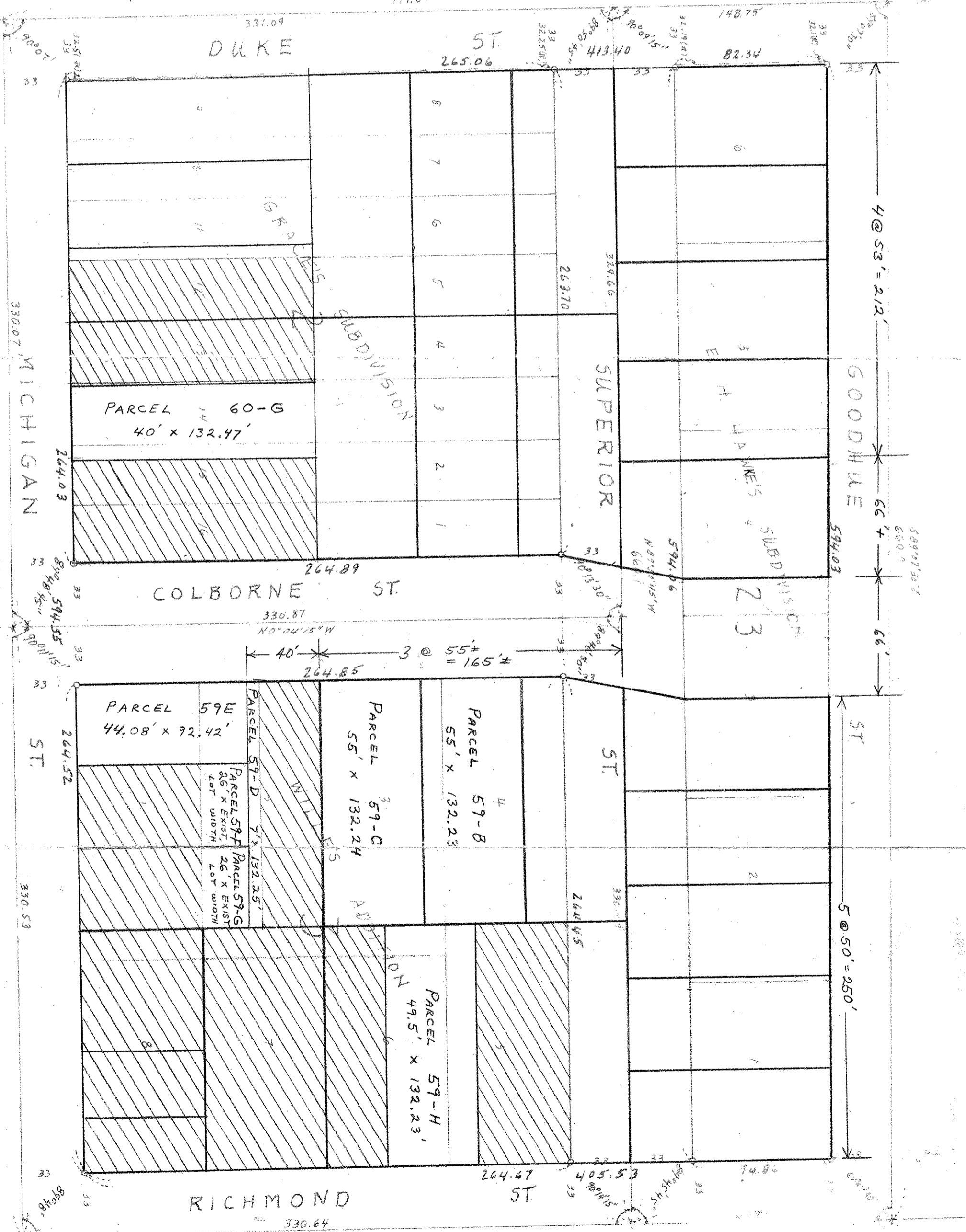
Contains: 243,320 Sq. Ft. m.e. or 5.586 Acres m.e.

Ramsey County, Minnesota

North
479.84

0 Duplicates from Monument

bearings are assumed.



471.09
50° 05' E