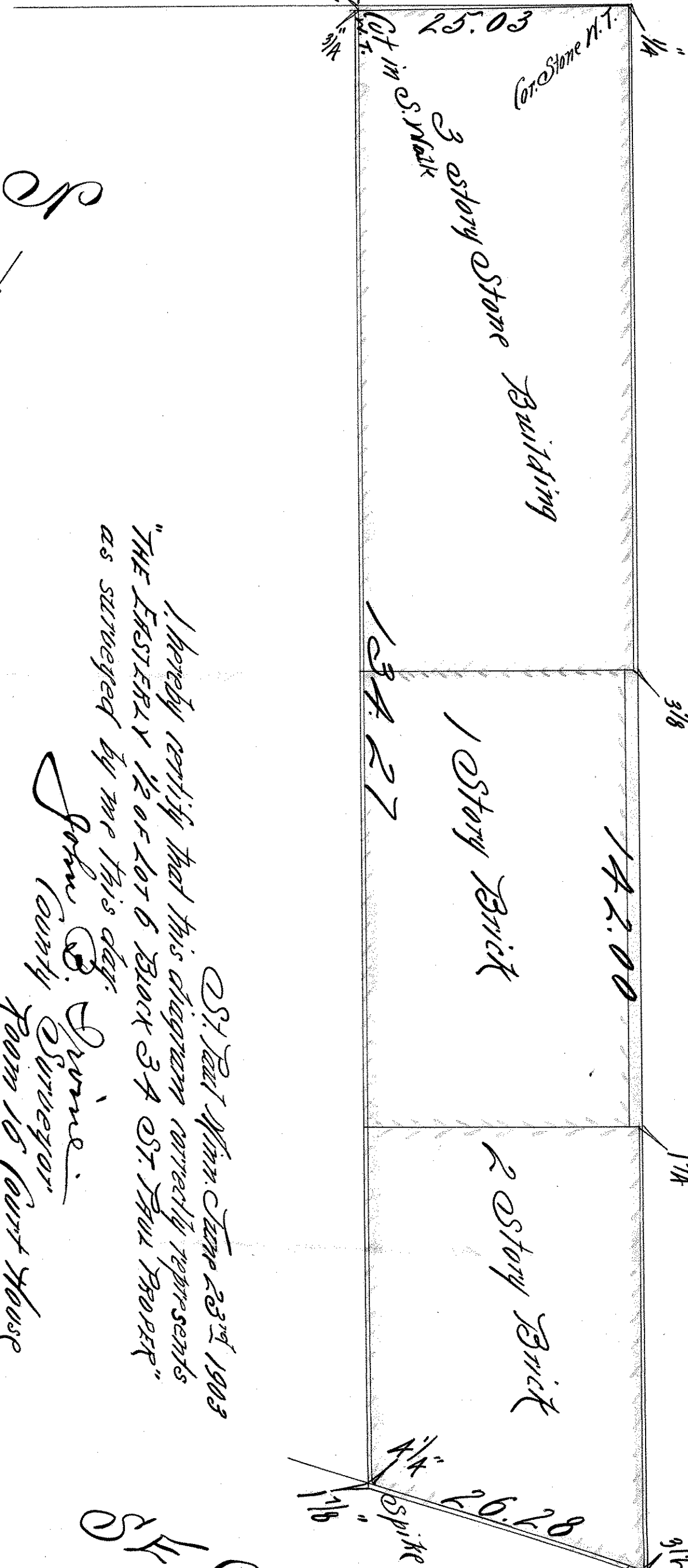


THE EASTERLY 1/2 OF LOT 6 BLOCK 3A
ST. PAUL PROPER.

Scale 10 Feet pr. inch

THIRD ST.

Original Southerly Line of 3rd St.
Opened



134.27

142.00

I hereby certify that this diagram correctly represents
"THE EASTERLY 1/2 OF LOT 6 BLOCK 3A ST. PAUL PROPER"
as surveyed by me this day.

John C. Irvine
Surveyor
Fannin County

Telephone: 334 T.C.
M. 2535 St. Minn.

SECOND ST.
(Formerly Bench St.)

ST.