

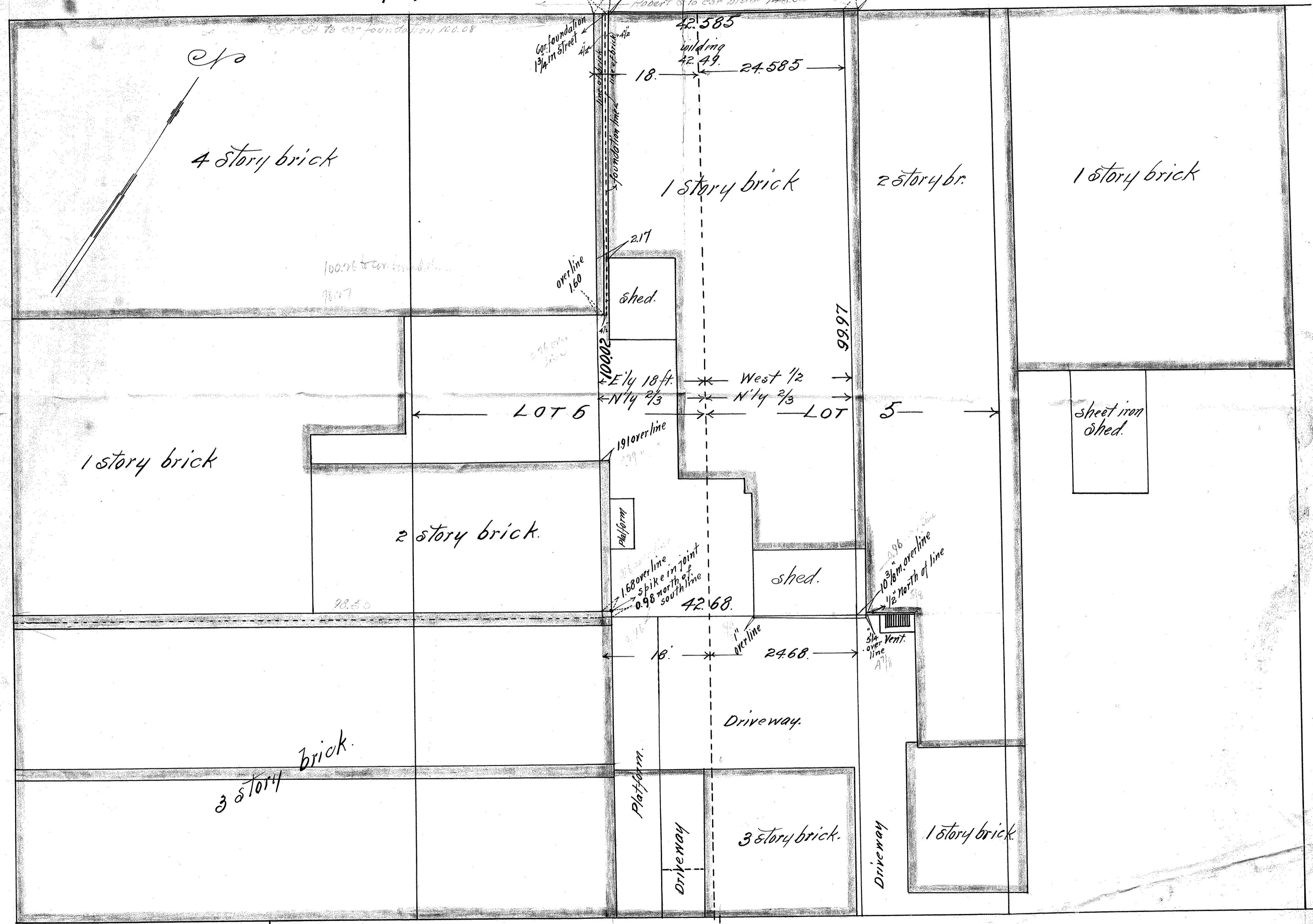
Thereby certify to having surveyed the W 1/4 1/2 & N 1/4 2/3 of Lot 5 & the E 1/4 1/2 of N 1/4 2/3 of Lot 6 Block 26 St. Paul, Proper and located the buildings thereon as shown by this plat and the same is correct.

John B. Pirnie  
Surveyor  
St. Paul, Minn.

E. FOURTH ST. June 22<sup>nd</sup> 1914.

scale 10 ft. per inch.

ROBERT ST.



Brick Paved