

FROM THE OFFICE OF

CHARLES O. GEORGI COMPANY

2215 West County Road B

Saint Paul, Minnesota

MINNESOTA REGISTERED LAND SURVEYOR

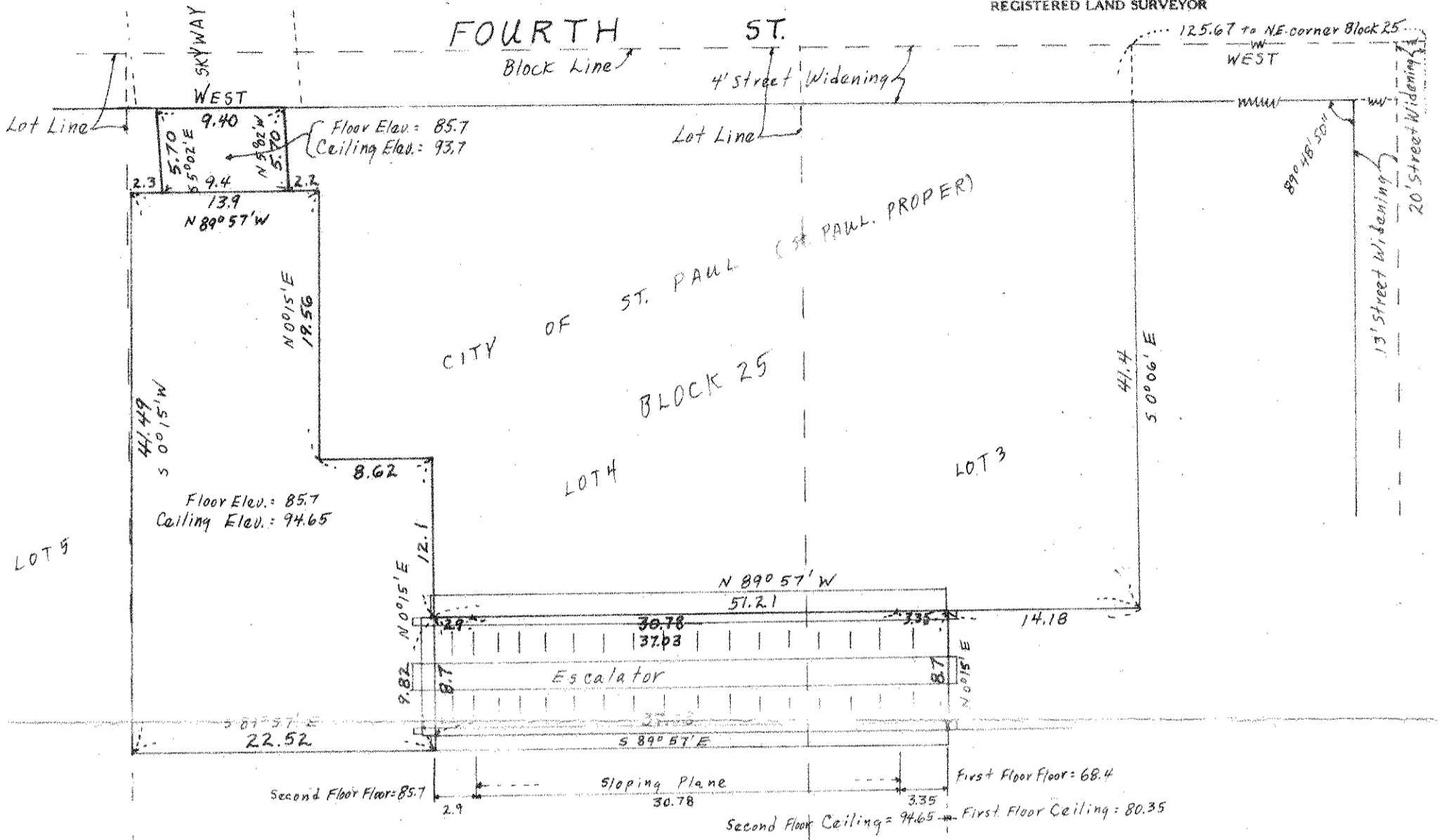
Certificate of Survey

I Hereby Certify that this plat shows a survey made by me of the property described on this plat, and that the corners are correctly placed as shown, and that all locations, encroachments, etc., have been correctly shown.

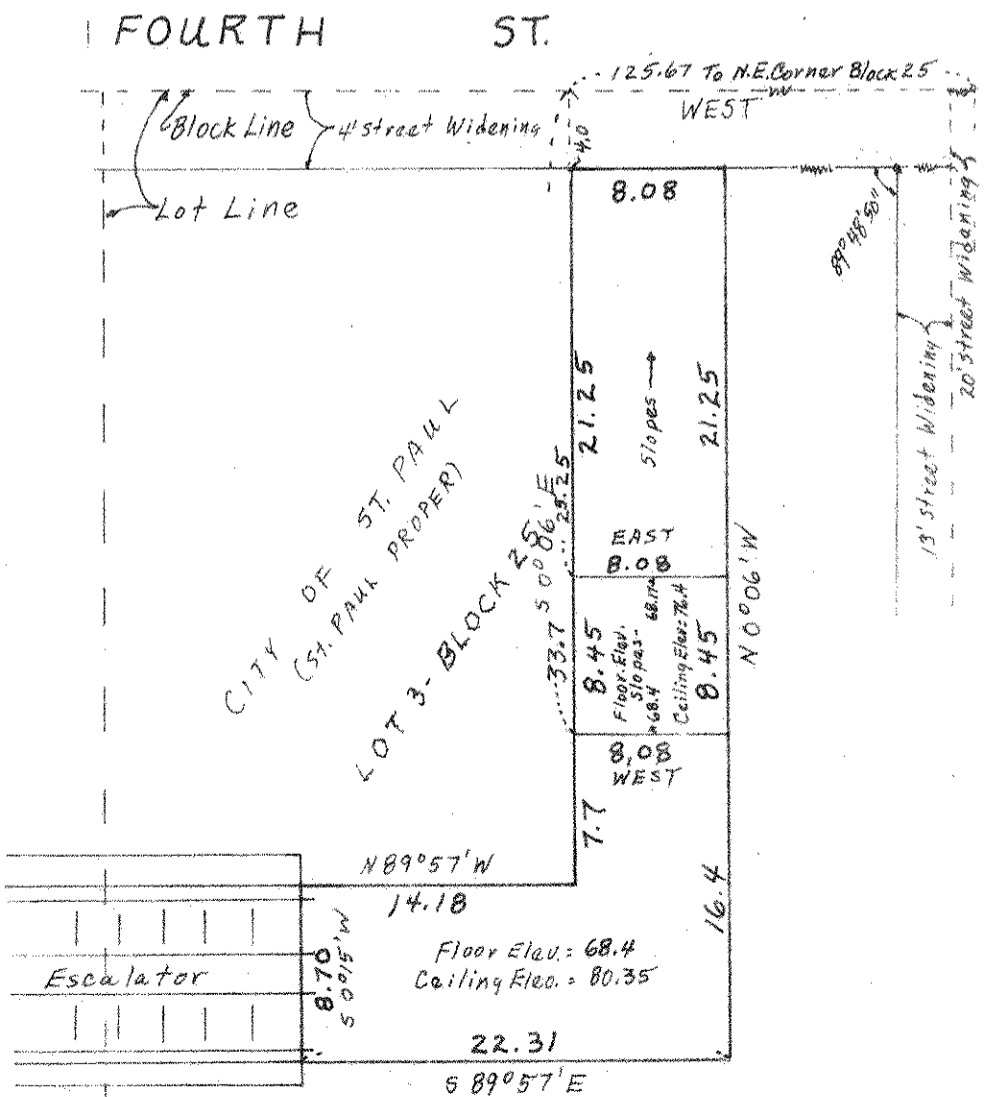
SHEET A

Surveyed For Kellogg Square Apartments
Date January, 1973
Scale 1" = 10'

By _____ REGISTERED LAND SURVEYOR



Second Floor Level



First Floor Level

