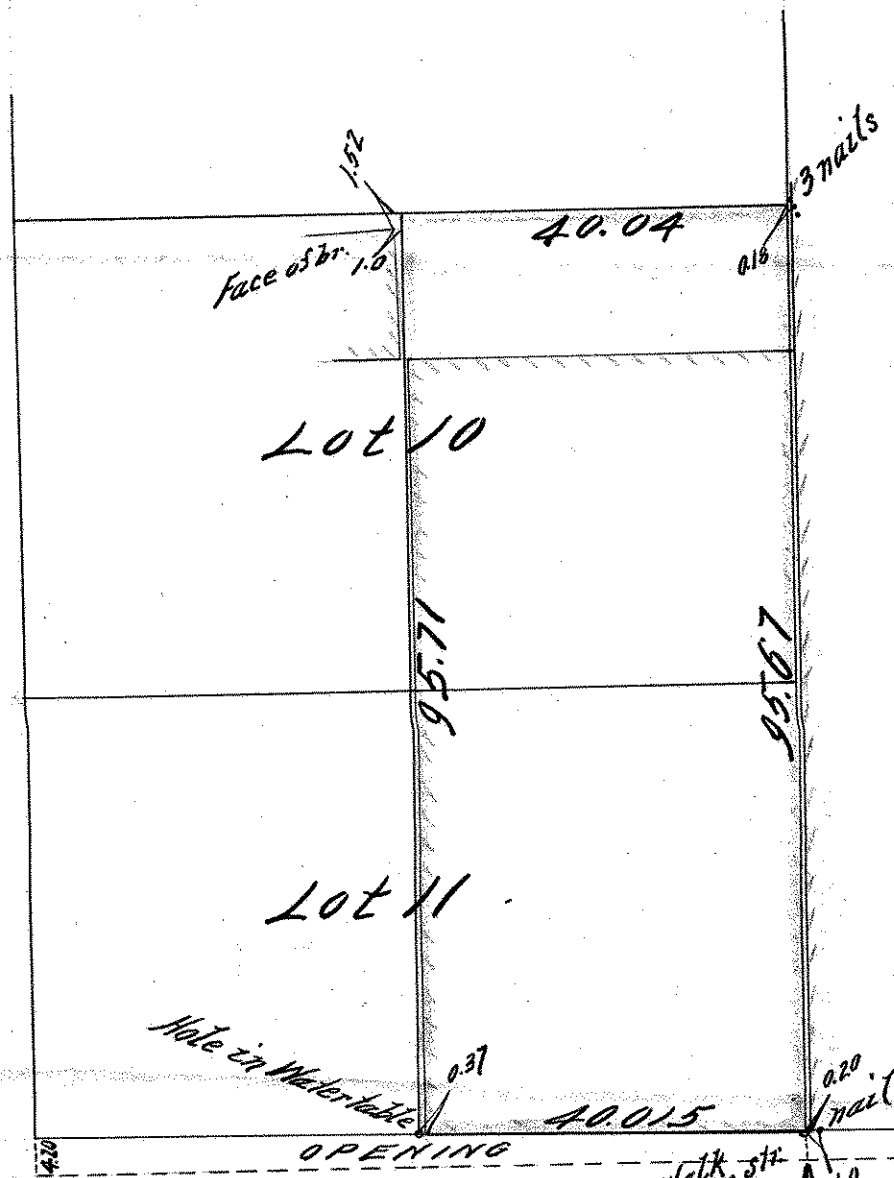


MAY 1902.

# EASTERLY 1/2 OF LOTS 10 & 11 BLOCK 25 ST. PAUL PROPER

scale 20 feet pr inch  
Surveyed May 6<sup>th</sup> 1902

MINNESOTA  
60  
ST.



THIRD

ST.  
4.30 opening

JOHN B. IRVIN...

Co. Surveyor, R. 16, Court House

B. 47. P. 3