

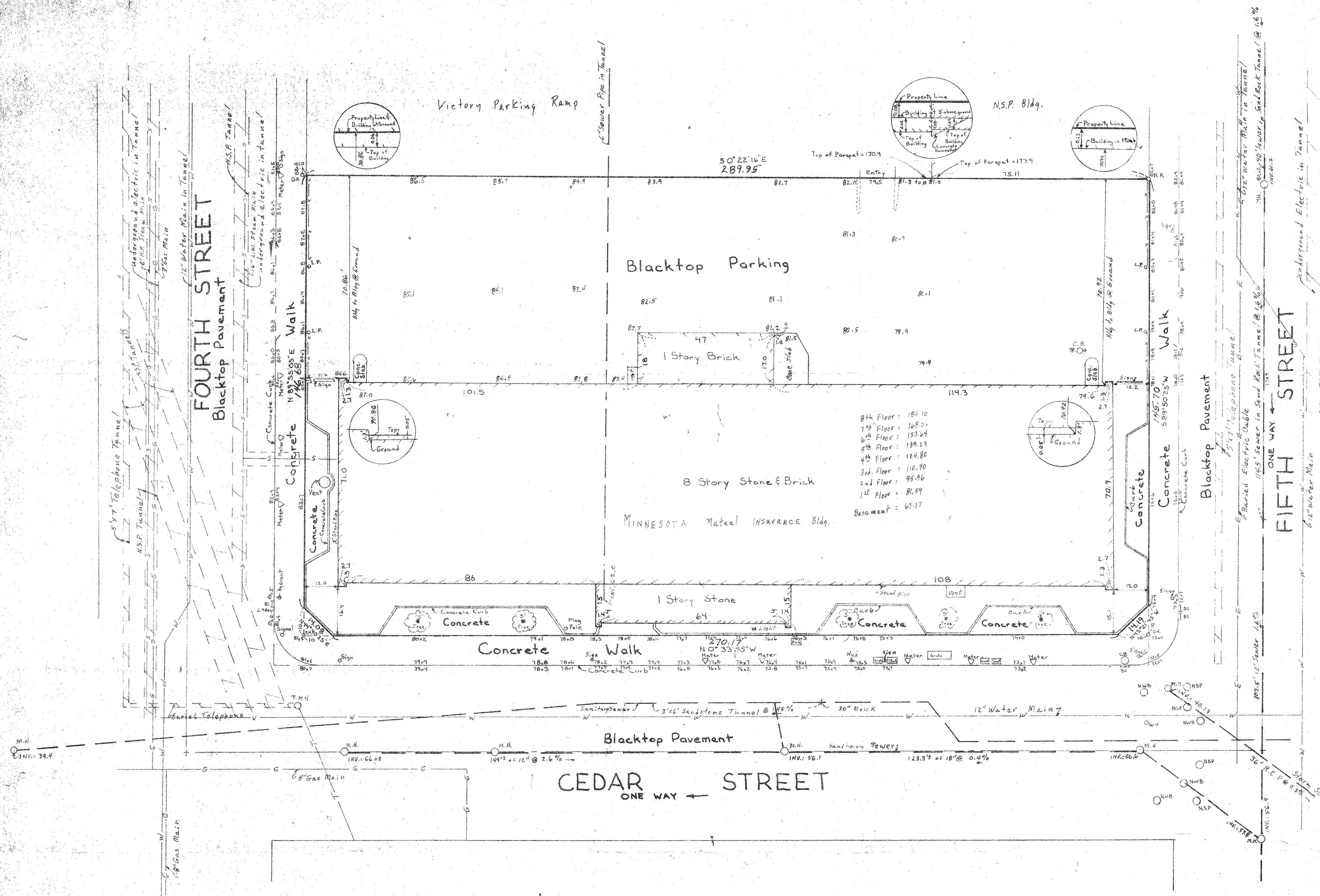
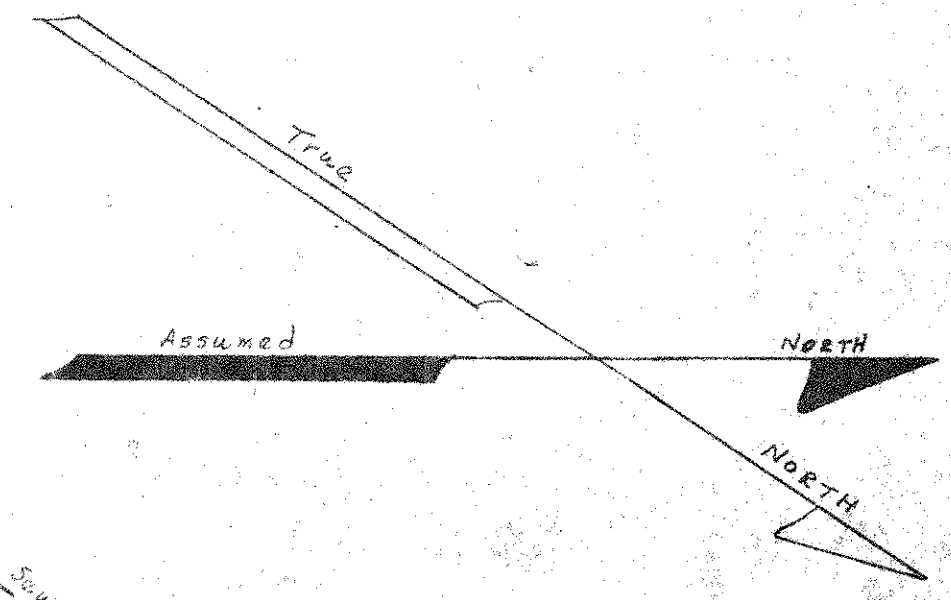
DESCRIPTION:
 Block 20, City of St. Paul, except the south westerly 167.5 feet and except the southeasterly 10 feet to be reserved for widening of Fourth street and except the north easterly 10 feet to be reserved for widening of Cedar Street and except triangles measuring 10 feet on each property line at the intersection of Cedar Street and Fourth street and at the intersection of Cedar Street and Fifth street after widening.

St. Paul, Ramsey County, Minnesota

- NOTES:
- ⊗ Denotes Drill Hole in Concrete
 - ⊙ Denotes Railroad Spike
 - M.H. Denotes Man hole
 - ⊕ Denotes Catch Basin
 - ⊙ Denotes Light Pole

All utilities are per public record & to accuracy of same.
 N.S.P. - Call 221-4444 prior to construction for field location.
 N.W. Bell Telephone - Call 344-7979 for field location.

All elevations are City of St. Paul Datum.
 B.M. = 82.47 = Top Hydrant SE corner 4th St. & Cedar St.
 B.M. = 84.95 = Top Hydrant NW corner 4th St. & Cedar St.
 B.M. = 78.39 = Top Hydrant West side Cedar 100' ± South of 5th St.



I Herby Certify that this Site Map shows a survey made by me or under my direct supervision of the property described hereon, I further Certify that the corners have been correctly placed as shown, and that all locations and elevations have been correctly shown.

Registered Land Surveyor No. 10759
 Date: _____

SITE MAP
 Minnesota Mutual Life Insurance Co.
 Cedar St. between 4th St. & 5th St.
 St. Paul, Minnesota
 SCALE: 1"=20'

GEORGI-SCHMIDT & ASSOC. INC.
 Land Surveyors
 3092 N. Lexington Ave. 483-4408
 ROSEVILLE, MINNESOTA 55113