

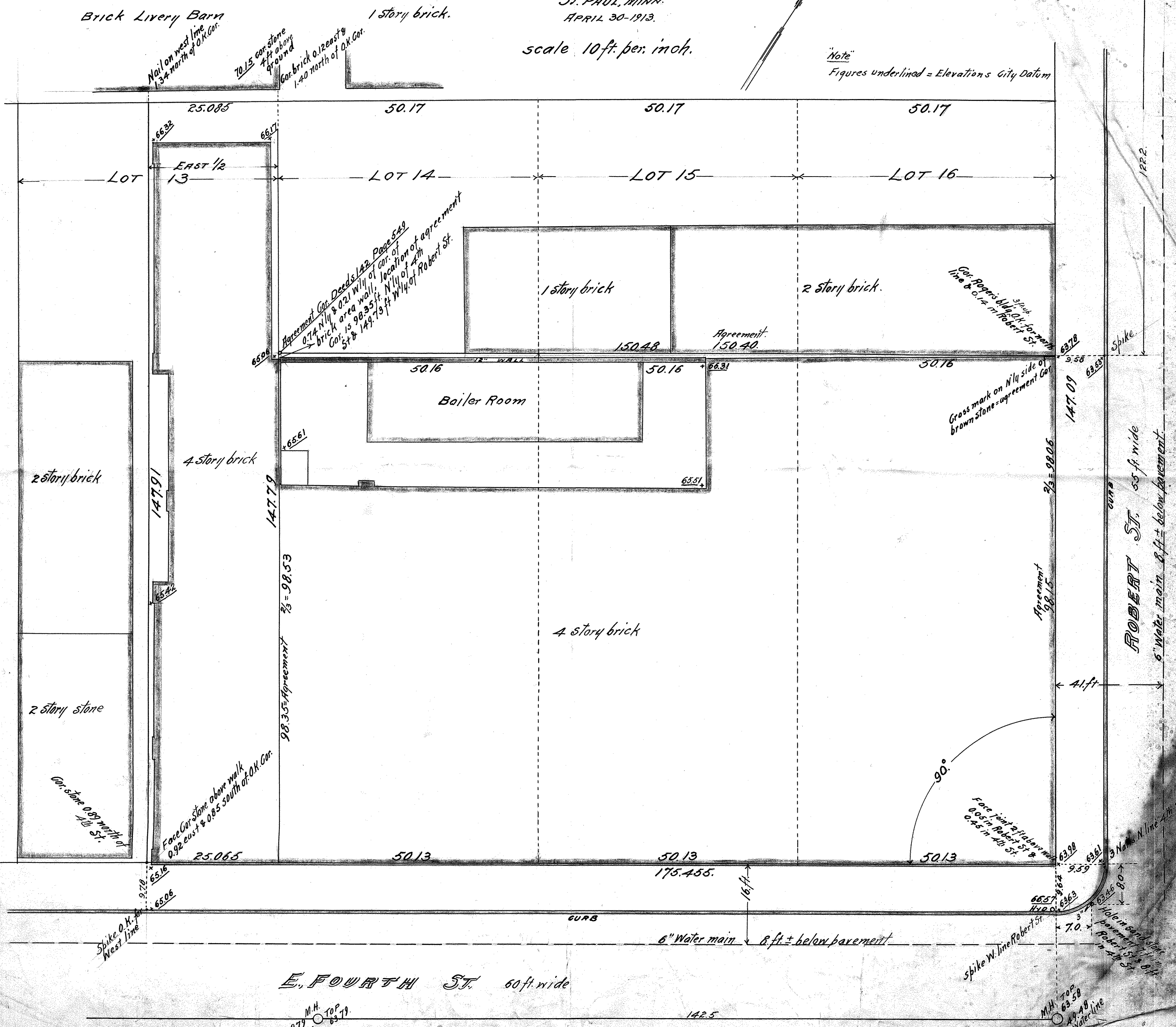
EAST 1/2 LOT 13 & S 2/3 LOTS 14, 15 & 16 BLOCK 18.

ST. PAUL PROPER.

JOHN B IRVINE, SURVEYOR.
ST. PAUL, MINN.
APRIL 30-1913.

scale 10 ft. per inch.

Note:
Figures underlined = Elevations City Datum



Brick Livery Barn

1 story brick.

Nail on west line
1.34 north of O.K. Cor.

70.15 cor. stone
4 ft above
ground

Cor. brick 0.12 east &
1.40 north of O.K. Cor.

LOT

EAST 1/2
LOT 13

LOT 14

LOT 15

LOT 16

4 story brick

1 story brick

2 story brick.

Bailer Room

2 story brick

2 story stone

4 story brick

ROBERT ST. 55 ft wide
6" water main 8 ft +/- below pavement

E. FOURTH ST. 60 ft. wide

6" Water main 8 ft +/- below pavement

90°
Face joint in above wall
0.05 in Robert St &
0.45 in 4th St.

Spike O.K. on
West line

Spike W. line Robert St.

M.H. TOP
49.79
Waterline

M.H. TOP
63.58
49.48
Waterline

M.H. TOP
63.59
45.89
Waterline