

EAST 1/2 LOT 13 & SOUTH 2/3 LOTS 14, 15 & 16 BLOCK 18

ST. PAUL PROPER,

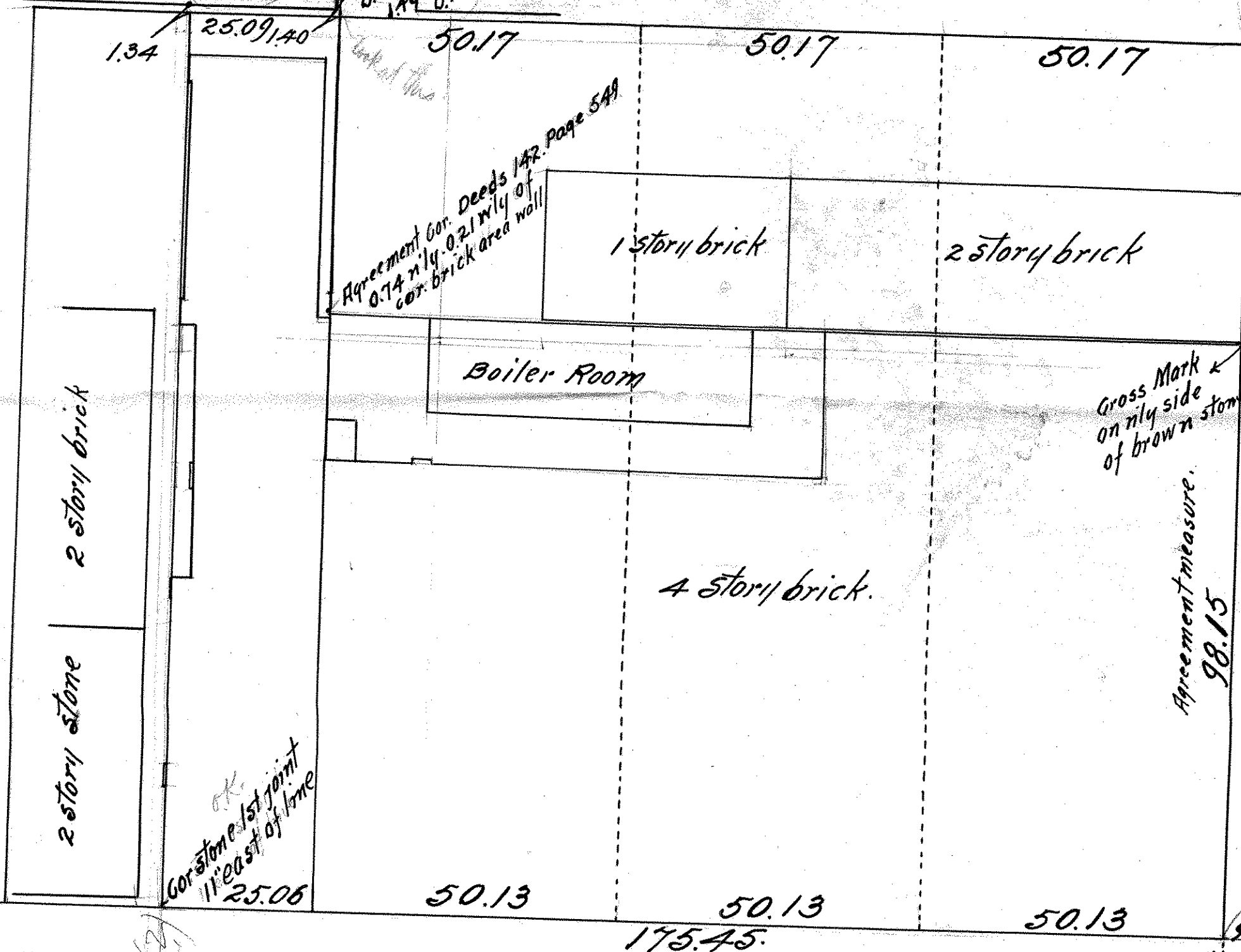
JOHN B. IRVINE, SURVEYOR.

ST. PAUL, MINN.

APRIL 30-1913.

Mon. E.O. 18  
Nail on west line  
1.34 north of  
north line

0.12  
Cor. brick  
0.12 east of  
1.40 north  
O.K. Cor.



Agreement Cor. Deeds 142. Page 549  
0.74 nly 0.21 wly of  
cor. brick area wall

Cor. of Rogers Brick Bldg  
O.K. for north line

Gross Mark  
on nly side  
of brown stone

Agreement measure.  
98.15

OK  
Cor. stone 1st joint  
11' east of line  
25.06

Face joint 2 ft above sidewalk  
0.05 in Robert St. & 0.45 in  
4th St.

9.59 3 Nails N. line St.

9.64  
3" Hole in sandstone pavement  
7 ft. in Rad. + 8 ft. in 4th St.  
spike w. line St.

Man hole

spike