

CHARLES O. GEORGI COMPANY

2215 West County Road B

Saint Paul 8, Minnesota

MINNESOTA REGISTERED LAND SURVEYOR

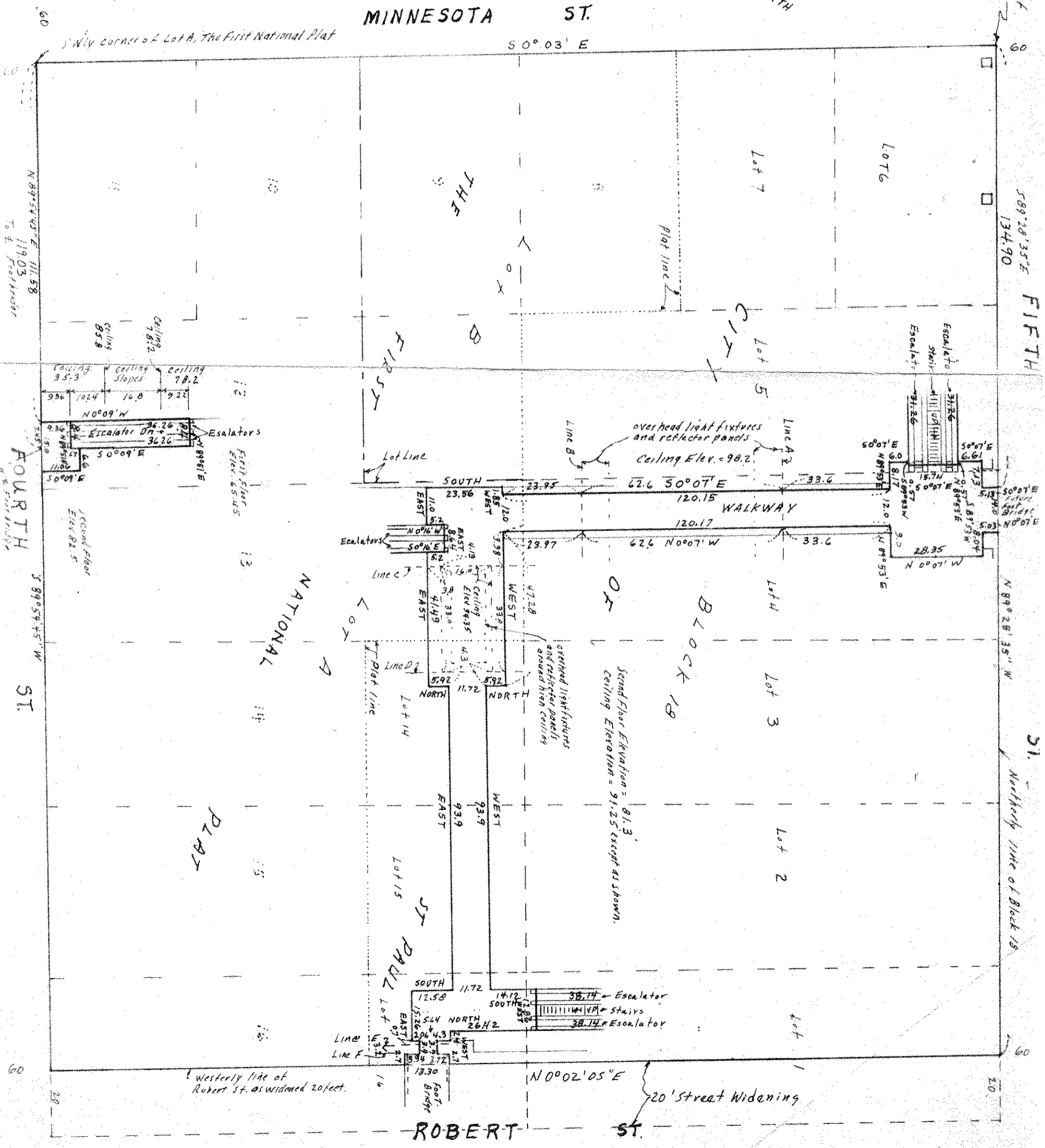
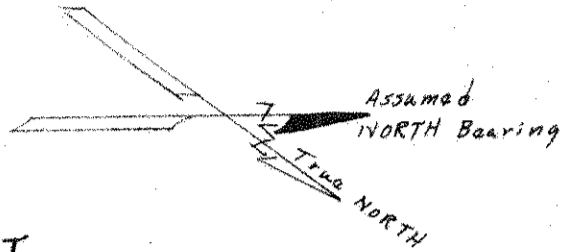
Certificate of Survey

I Hereby Certify that this plat shows ^{location} a survey made by me, of the property described on this plat, and that the corners are correctly ^{located} placed as shown, and that all locations, encroachments, etc., have been correctly shown.

Surveyed For FIRST NATIONAL BANK OF ST. PAUL, and HOUSING AND REDEVELOPMENT AUTHORITY
Date JANUARY 1972 Updated MARCH 1972
Scale 1" = 30'

By Charles O. Georgi
REGISTERED LAND SURVEYOR

DESCRIPTION:
See Attached Sheets 9 and 10



Sheet B
FIRST NATIONAL BANK OF ST. PAUL
NW 1/4 Corner of Block 18
589' 28' 35" E 134.90
FIFTH ST.
N 89° 28' 35" W
51' Northernly line of Block 18