

**Certificate
of Survey**

FROM THE OFFICE OF

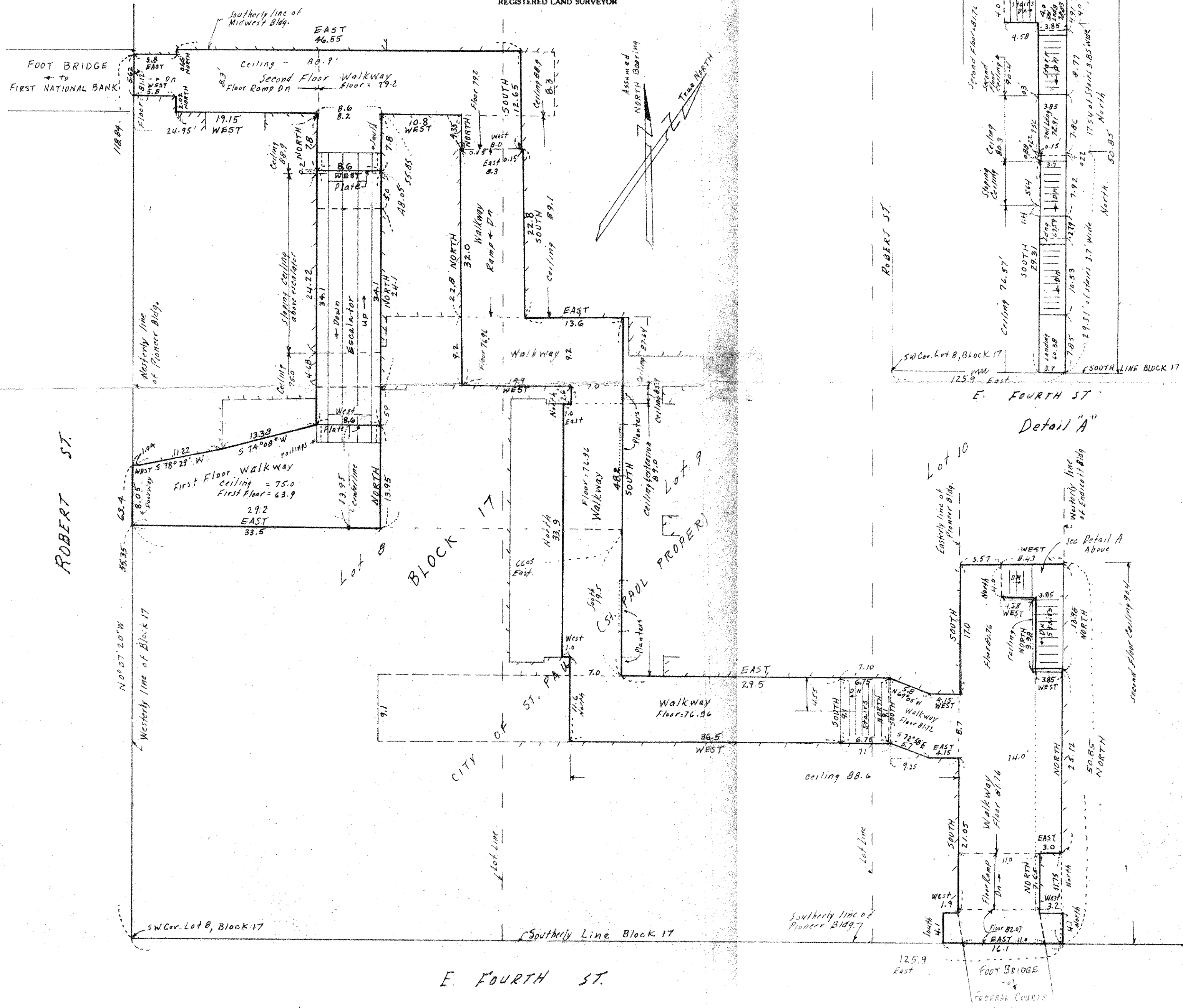
CHARLES O. GEORGI COMPANY

2215 West County Road B Saint Paul 8, Minnesota
MINNESOTA REGISTERED LAND SURVEYOR

I Herby Certify that this plat shows a survey made by me of the property described on this plat, and that the corners are correctly placed as shown, and that all locations, encroachments, etc., have been correctly shown.
8/30/71 Revised by Bridge on South & Center hallway to 8.0 feet was 7.0 feet.

Surveyed For HOUSING AUTHORITY
Date May 1971 to July 1971 completed
Scale 1" = 10'

By Charles O. Georgi
REGISTERED LAND SURVEYOR



DESCRIPTION:

For Public Easement in Lots 8, 9, & 10, Block 17 of City of St. Paul (St. Paul Proper)
See separate sheet for detailed description.